

Handbook Flint River Presbytery 148th Stated Meeting



August 2, 2025



Debra Tregaskis, Executive Presbyter
Rebecca Willis, Stated Clerk
Toni Hatfield, Bookkeeper
Elizabeth Cantrell, Ministry Associate

July 17, 2025

Flint River Saints,

This packet of information is intended to assist you in preparing for the 148th Stated Meeting of Flint River Presbytery at **Covenant Presbyterian Church**, located at 2126 Edgewater Drive, Albany on **Saturday, August 2, 2025**. Although our meeting will take place at Covenant, the meeting is jointly hosted by CK Smith, First (Albany), and Covenant. *We are so grateful for their partnership in preparing for this meeting!*

Registration will begin at 9:00 a.m. For new commissioners, a class will begin at 9:30 a.m. Lunch, served after the meeting will be provided at a cost of \$10.00 and will feature a lovely catered selection from Mi Casa, a business owned by local Presbyterians. As always, cash and checks will also be accepted at registration. Childcare will be provided at no extra charge. If you need childcare, please be sure to notify Elizabeth at ecantrell@flintriverpresbytery.org by **Monday, July 28th**. *Staff will be featuring our new FRP t-shirts and there will be some available to purchase at the meeting!* Please plan to dress casually and comfortably for this hot summer day.

This meeting is an important one – and will be full of energy and joy. Youth who attend our presbytery's Montreat Youth Conference will be leading us in song and Dana Walker of the Presbyterian Foundation, will be sharing stories of congregations who have wrestled with challenges and found new ways to be Church. We'll also receive a candidate for ministry upon our Committee on Preparation for Ministry's recommendation and learn about resources to support your local congregation.

The pages that follow will include the usual agenda and reports. Please read all the enclosed material carefully and prayerfully *prior to coming to the meeting* so you can make informed and intentional decisions. Remember that there may be Addendum items for your review as well; however, they will not go online until **Thursday, August 31st**. **After our meeting, please be certain to share key information with your Session and congregation.**

2800 Old Dawson Road, Suite 2, Box 312 , Albany, GA 31707



Debra Tregaskis, Executive Presbyter
Rebecca Willis, Stated Clerk
Toni Hatfield, Bookkeeper
Elizabeth Cantrell, Ministry Associate

Finally, our offering for the day will go to support **New American Pathways**, an Atlanta based nonprofit with the mission of helping refugees and Georgia thrive – together. Of course, we'll be collecting school supplies as well, so bring them with you as well as your rinsed aluminum cans for our **Metal for Meds mission**. Al Fatkin of Northminster will be parked by the back parking lot of the church to collect cans in his truck and trailer. Student interns from Westminster will be available to help commissioners carry cans and/or school supplies to their necessary places. As always, we'll also have our Noisy Offering, which will go to support our annual Rise Against Hunger events throughout our presbytery.

We look forward to seeing you face-to-face as we serve our Lord Jesus Christ together!

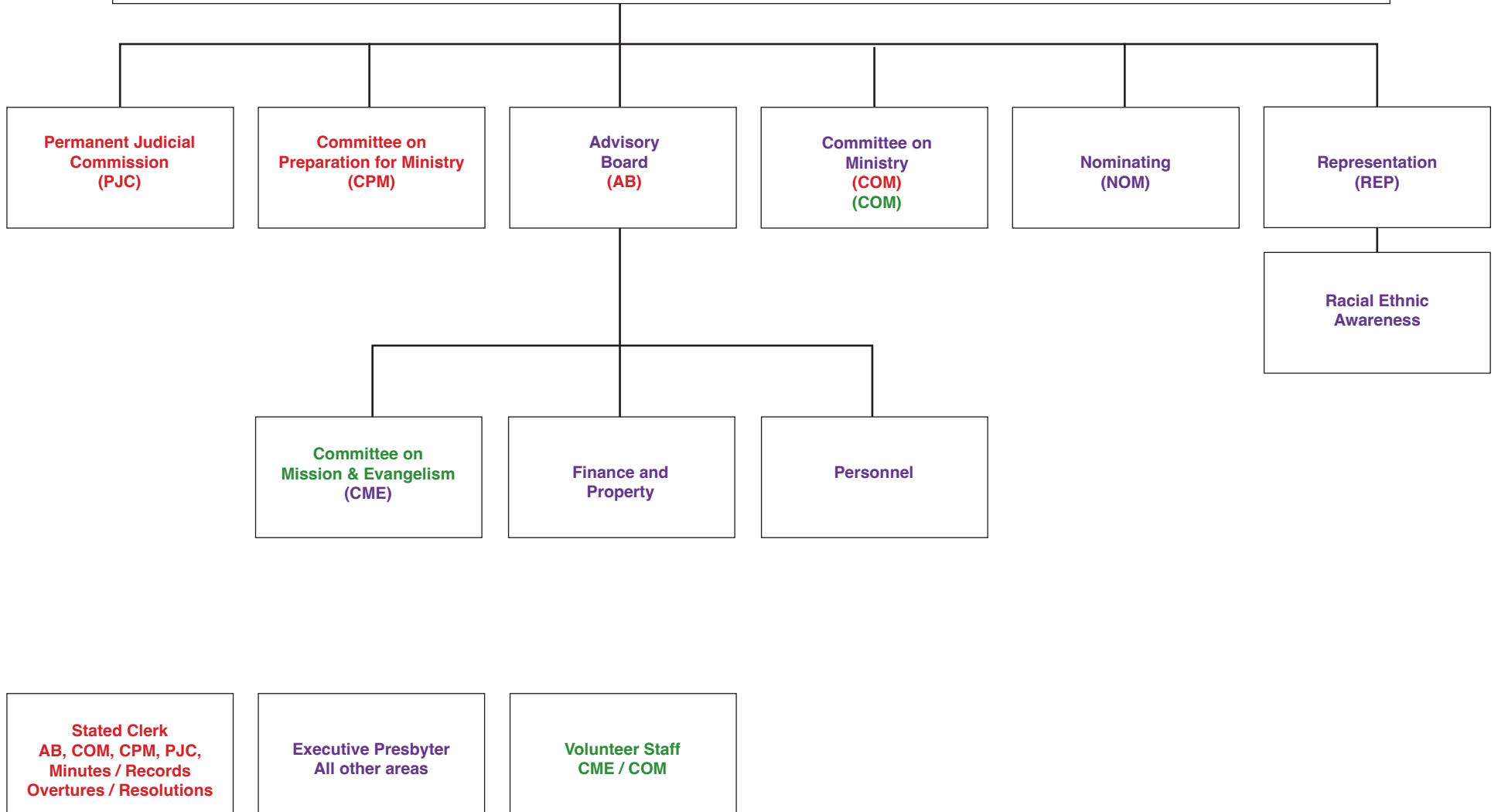
In Christ's Hope,
Deb, Becky, Elizabeth, Brittany, Laura, and Toni

P.S. As part of our new practice to offer **FREE continuing education events** for all interested individuals, Dana Waters will be offering a class **at Covenant on Friday, August 1st from 3-4:30 pm** around the latest trends and recommendations around church budgeting, finance, and stewardship, with an emphasis on small church contexts. The primary goal will be for you to leave with practical tools and resources that you can use in your congregation.

At the conclusion of our post-presbytery lunch, Dana Waters will also provide a class entitled *Legacy Giving for Your Congregation*. In this workshop, participants will learn how to build a successful legacy giving program, including the strategies and messages that can help members connect their personal legacies with your congregation's work for generations to come.

2800 Old Dawson Road, Suite 2, Box 312, Albany, GA 31707

Flint River Presbytery Committee Structure / Staff Responsibility



*****2025 Flint River Presbytery Calendar for Congregational Leaders*****

Remember to go to www.flintriverpresbytery.org
under both the **PASTORS** tab, the **ELDERS** tab and the **EDUCATORS** tab
where you will find countless resources for Session meetings and other gatherings.

Directory password = frpsaints

ADDITIONAL DATES ARE ADDED AS AVAILABLE throughout the year,
so please DO pay attention to updates **(which are highlighted in green).**

August

August 2 10 am

In-person presbytery meeting at Covenant (Albany) with CK Smith and First (Albany) co-hosting

August 20 12 noon – 2 pm

Central and Southern Clergy Clusters Lunch; location TBD

August 31 Pre-registration deadline for Montreat Youth Conference 2026 due today.

- Pre-Registration allows congregations to register at the 2025 rate to avoid the 5% increase once registration opens in October
- Pre-Registration gives churches the option to adjust registration numbers to be lower before December 1 without incurring any forfeit fees

September

Stewardship Information for 2026 presbytery budget requests lands in your inbox this month. Specific per capita and pledge figures will be included in this information. If you have not received this information, please reach out to Elizabeth at ecantrell@flintriverpresbytery.org

Also, have you ordered your books for our CTS continuing education event during **November 11 -14, 2025 and purchased the following books?**

- Keeping the Sabbath Wholly: Ceasing, Resting, Embracing, Feasting by Marva Dawn,
- Subversive Sabbath; The Surprising Power of Rest in a Nonstop World by A.J. Swoboda
- The Sabbath by Abraham Joshua Heschel

*****2025 Flint River Presbytery Calendar for Congregational Leaders*****

October

- Oct 1 3rd quarter financial review
Have you sent your 3rd quarter per capita payments and pledge gifts to FRP?
- Oct 2 10 am
ZOOM Call of the Year for all individuals enrolled in some portion of the Board of Pensions to learn about key benefits. Annual enrollment deadline is Friday, November 7th.
- Oct 5 World Communion Sunday and Rise Against Hunger, locations TBD
- Oct 8 12 noon – 2 pm
NE Clergy Cluster Lunch Gathering, location TBD
- Oct 15 **Walter Flint Fund Grant Reports due**
- Oct 16 **FRP Packet goes out today.**
Have you appointed an elder to attend the meeting?
- Oct 30 **Walter Flint Fund Grant Requests due**
- Oct 31 Deadline to register for November CTS Continuing Education Event

November

- Nov 1 10 am
FRP meeting online
- Nov 11-14 4 pm on 11th to lunch on 14th
Columbia Theological Seminary Continuing Education
(\$75 for entire event due to generous subsidy)
- Nov 19 12 noon – 2 pm
Central and Southern Clergy Clusters Lunch Gathering in Thomasville
Specific location TBD

*****2025 Flint River Presbytery Calendar for Congregational Leaders*****

December

December 31

5 pm

**CRE Annual Reports due; please send to
ecantrell@flintriverpresbytery.org**

Also, 4th quarter financial review

Have you sent your final 4th quarter per capita payments and pledge gifts to FRP? Remember that the books for the year close on January 10th and that 2026 pledges are due by January 31, 2026.

SAVE THE DATES NOW!

February 20-21, 2026

**GA-wide, 5-presbytery gathering at Epworth by the Sea
Resource-sharing and relationship-building.**



Empower

Encourage

Engage

Equip

Experiment

Agenda of the Presbytery of Flint River of the Presbyterian Church (USA)

Saturday, August 2, 2025

¹⁴We must no longer be children, *tossed to and fro and blown about by every wind* of doctrine by people’s trickery, by their craftiness in deceitful scheming; ¹⁵but speaking the truth in love, we must grow up in every way into him who is the head, into Christ,¹⁶ from whom the whole body, joined and knit together by every ligament with which it is equipped, as each part is working properly, promotes the body’s growth in building itself up in love. – Ephesians 4: 14-16

WIFI for today’s meeting:

Network Name: NETGEAR_11AC

Password: sharedsecret

Registration with Ministry Associate, Elizabeth Cantrell 9:00 am

Orientation of Commissioners with Stated Clerk, Becky Willis 9:30 am

Gathering as God’s People

Welcome Host Churches

Gathering Prayer and Call to Order Glennie Wicks

Approval of the Agenda Sharita Hendley

Roll Call and Introductions Becky Willis

Recognizing the TRE graduating class of 2025 Ralph Hawkins

Opening Litany of Celebration can be found on page 10

Hymn #430 “Come Sing, O Church, In Joy!

The offering for the day will be collected as we sing.

We invite you to give in order to support New American Pathways (NAP) so that we may supplement our in-kind offerings with a financial gift. You may donate online at our website or write a check.

Please note that it is for our August FRP offering.

We will also collect our Noisy Offering for the Hunger Fund.

*The offering today will be collected and blessed by 2 TRE graduates,
Julia Meredith and Floyd Whitehead*

Encouraging and Equipping God’s People

Connecting the Dots: What in the World is our Advisory Board Up to? Joshua Bower
Sharita Hendley

Montreat Moment

Connecting with Scripture: Acts 27 Deb Tregaskis

Paul’s Warning, Winds Growing, Panic Spreading, and Angel Appearing

Hymn #286 “Give to the Winds Thy Fears” (to the tune of “We Give Thee but Thine Own”)

Picture QUEST!

Information about our Joint Ministries Glennie Wicks

Advisory Board page 12

Stated Clerk Report page 13

Committees and Commissions pages 14-17

Connecting with Song Brittany DiGiammarino

An original composition whose words can be found on page 11

Action Items pages 18-21

Addendum Reports

Engaging the World as God's People

Stories of Regeneration

Dana Waters

Announcements for the Common Good

Final Reflections and Blessings

offered by TREs David Carter, Rita Montgomery, Pam Moyer, Jennifer Shepherd,
and Joe Slaughter

Adjournment

Lunch in the Fellowship Hall

At the conclusion of lunch, Dana Waters will provide a class entitled *Legacy Giving for Your Congregation*. In this workshop, participants will learn how to build a successful legacy giving program, including the strategies and messages that can help members connect their personal legacies with your congregation's work for generations to come. *Class location will be announced!*

Opening Litany of Celebration

One: You are God's beloved servants, gifted with capabilities and courage.

All: We are Presbyterian Christians from Albany and Americus, Blakely and Boston, Cordele, Cuthbert, and Columbus, Macon and Moultrie, Thomasville and Thomaston, Valdosta and Warner Robins.

We have traveled from tiny churches tucked away on winding roads and we have traveled from larger churches nestled near city halls and downtown traffic.

One: You have been blessed in the waters of baptism, chosen and called.

All: We have been blessed with faithful companions, who have walked through the living waters and sat at tables, groaning with holy promise.

One: Let us give thanks to God for the gifts of these Trained Ruling Elders! Having sensed a call to serve as Trained Ruling Elders, they have completed their year-long commitment. May their lives shine ever more brightly as they seek to serve God's people.

Do you, Flint River Presbytery, commit to supporting these Trained Ruling Elders through prayer and encouragement?

All: We do!

One: Do you, Flint River saints, commit to supporting them as they discern how they might serve in new ways among us?

All: We do!

One: TREs, you have heard the promises of your brothers and sisters. Do you promise to serve within our bounds, seeking to always build up our presbytery family through humility, joy, and love?

All: We do!

One: So let us live into these holy promises, ever ready to listen deeply and love extravagantly.

All: Thanks be to God! AMEN

🎵 “The Presbyterian National Anthem” 🎵 Or: “We’ve Always Done It This Way”

(music by Small Church Coordinator, Brittany DiGiammarino;
words also by BG with some help from ChatGPT)

Verse 1:

We arrive at church on Sunday, find our pew with gentle pride,
If someone tries to sit there, we just smile... and die inside.
We pass the peace and sing doxology with our bulletins in hand,
Then sit down kindof’ awkwardly to listen to God’s plan.

Chorus:

🎵 Glory, glory, Frozen Chosen!
Pass the jell-o, no emotion!
We believe in calm devotion!
And we’ve always done it this way! 🎵

Verse 2:

We don’t clap after the anthem — that’s a rule that’s etched in stone,
We just nod like, “Yes, that moved me,” in a soft and reverent tone.
And our prayers are all pre-written, triple-checked by seven teams—
‘Cause spontaneous expressions give us *liturgical hives*, it seems.

Chorus

Verse 3:

We once had a session meeting over coffee strength and brands,
And the color of the carpet nearly caused a fight to stand.
But we called a task force to discern for forty days and nights—
Now it’s beige, and thanks to Robert's Rules, we avoided a Worship fight!

Bridge:

We tithe with auto-payments, we snack on lemon squares,
We read from Calvin’s commentaries sitting in lawn chairs.
We love our potluck bingo, our chicken casserole—
And we’ll form a new committee just to warm your soul!

Final Chorus

We’re all friendly theologians
We believe that all are welcome
And we’ll always do it this way.
Yes we’ll always do it this way!

FOR INFORMATION

The ministry items mentioned in the following pages occur because of the commitment and imagination of faithful people *just like you* from every corner of our presbytery. Please read this attentively and prayerfully and learn about the ways in which we are working together with our 42 worshipping communities (38 congregations and 4 campus ministries).

Advisory Board (AB) – Sharita Hendley, moderator

1. Read and prayed our Scripture for the year – Acts 27 – where we have immersed ourselves in 4 movements:

Paul's Warning
Winds Growing
Panic Spreading
Angel Appearing

2. Discussed at length the significance of the third movement – *panic spreading* – and its significance for us today.

3. Reviewed the presbytery's organizational structure with the purpose of aligning the structure with what we believe is crucial, while also releasing those parts of the structure which are no longer necessary.

4. Dissolved the Committee on Education and Nurture within our organizational structure.

5. Approved adding an Advisory Board liaison from both the Representation Committee and the Personnel Committee in order to emphasize the important work of these committees.

6. In lieu of Personnel's recommendation for a 5% increase and given that there were no pay increases in 2025, recommended a 7.5% pay increase for all FRP employees to the Finance Committee.

7. Approved a Presbytery-Wide Bible Study Initiative that will begin September 2, 2025, using material entitled *Finding Resilience, Joy, and Our Identity in Jesus Christ*. Small church coordinator, Laura Peiper, will lead this Zoom study. More information to come.

Stated Clerk -- Becky Willis

8. **Minutes and Records Review** will again be conducted during August. Some clerks have already submitted their minutes and records, and that is greatly appreciated. The deadline for submission for review is August 31, 2025. The *Book of Order* mandates that all sessions submit these documents annually. Minutes and records may be sent to the Stated Clerk for review either by email to bwillis123a@yahoo.com or by USPS to 680 Bethany Church Rd., Bainbridge, GA 39817. Please do not send your original documents by mail. Minutes and records may also be peer reviewed with another Clerk of Session and the Session Review Form mailed to the Stated Clerk OR they may be sent to a member of the Minutes and Records Committee (contact information may be found in the presbytery's directory).

9. **Clerk's Corner** continues each quarter with the final session for 2025 scheduled for October 21, 2025, at 7:00 pm via Zoom. Clerks of Session, Treasurers, and anyone wishing to participate are welcome to attend. The PowerPoints used for this training are posted on the presbytery's website under the Clerks of Session tab.

10. **Presbytery-approved minimum Terms of Call** are currently as follows:

Installed Pastors:	\$40,000 (cash salary with housing allowance)
	\$30,770 (cash salary with manse)

Certified Christian Educators:	\$30,000
--------------------------------	----------

Certified Christian Educators will have Terms of Call commensurate for the hours worked and level of responsibility. All Terms of Call must include a provision to offer a minimum of twelve weeks of paid family leave for installed pastors as well as Board of Pensions requirements. Instructions and templates may be found on the presbytery's website.

Committee on Mission and Evangelism (CME) -- Rita Montgomery, moderator

Beth Jarrell and Pam Moye as volunteer staff associates

Rise Against Hunger Updates

**Sunday, October 5th, 2025 at 2:00 pm
(World Communion Sunday)**

Central Cluster will be hosted by Covenant together with CK Smith and First (Albany).
The funds for this cluster have already been raised,
although donations are always welcome!

Northeast Cluster will be hosted by Forsyth.
Northwest Cluster will be hosted by First (Columbus)
Southern Cluster will be hosted by Trinity (Valdosta)

Committee on Ministry (COM) – Bradley Walker, Moderator

with Sharon McFarland as Volunteer Staff Associate

11. Offered enthusiastic support and formal written acknowledgement for the Shared Ministry Covenant Grant Application to the Board of Pensions between First (Albany), First (Americus), and Elmodel. *(This grant was awarded, effective July 10, 2025!)*
12. Ratified Matthew Cowell as laboring outside the bounds of FRP in his validated ministry as a chaplain at the Columbus Hospice of Georgia and Alabama.
13. Examined and approved the following students as graduates of the Trained Ruling Elder program: Chuck Bannister, Sarah Broussard, David Carter, Anthony Ellis, Ray Ford, Brittany DiGiammarino, Sharita Hendley, Julia Meredith, Pam Moye, Laura Peiper, Jennifer Shepherd, Joe Slaughter, Floyd Whitehead and Bill Wick. (See Bios on pages 22-36).

14. Recommended approval of the following items within each Cluster:

Northeast

Curtis White as Member at Large, effective June 1, 2025.

Contract between Barnesville and MJ Gardner, through December 31, 2025.

Northwest

Contract between Sherwood and Judy Hay, CRE, through December 31, 2025.

Central.

Elder Waiver for First (Cordele) until May 14, 2028.

HK Johnston as Co-Moderator with Nancy Reimer at Cuthbert.

Southern

Contract between Quitman and Brad Shealy, CRE, through December 31, 2025.

Recommissioning Brad Shealy, CRE, to Quitman until May 2028.

Recommissioning Henry Walden, CRE, to Second (Thomasville) until May 2028.

Recommissioning Melissa Coleman, CRE, to The Center at VSU until July 2028.

15. Welcomed with gratitude, Carol Rahn, a retired minister from Mission Presbytery, into our bounds and placed her on our pulpit supply list.

16. Reviewed the updated pulpit supply list and approved all members listed on it, effective July 17, 2025. (*see attachments, page 1-2)

17. Reviewed an extensive Board of Pensions document from our Executive Presbyter, that will be presented via Zoom to all interested staff enrolled in the BOP, prior to annual enrollment. (*see attachments, page 3-4)

18. Noted that a new TRE class will begin in January 2026. Updates around the application process will begin in mid-August with a deadline of **October 15, 2025** for applications to be received.

Committee on Preparation for Ministry (CPM) - Nancy Reimer and Marilyn Tucker-Marek, co-moderators

19. Moved to offer \$10,000 from the Inquirer/Candidates' Fund (which has \$17, 026.46) in order to provide funds for pastoral leaders with emergency needs. The *Minster Aid* account previously had no funds available and is used to aid pastors when emergencies arise.

20. Approved the use of \$300 for Safiyah Abdullah's portion of the psychological evaluation (in addition to the \$300 already contributed) in the event that finances are preventing her from scheduling the evaluation.

21. Endorsed Abbie Ryon's move from Inquirer to Candidate

22. Accepted the draft of the Manual of Operations Committee of Preparation for Ministry (CPM) of Flint River Presbytery as it has been presented by Sommer Fulmer Bower, with heartfelt thanks for all of her work.

Finance Committee (FIN) – Demetrise Battle and Dick Shelton, co-moderators

The Finance Committee continues to be so very grateful for the generosity of our congregations! Thank you!

Our Finance Committee members are dedicated to communicating with sessions. Please reach out with any questions.

23. Received a report from Dana Waters and David English of the Presbyterian Foundation regarding the current available funds from the sale of the All Saints church building (approximately \$439,256) and gained clarity around the ways in which the Ramey Fund and Wilgus Fund can be used to support the building of Habitat for Humanity homes within the bounds of our presbytery.

24. Reviewed our stewardship materials for 2026 and set per capita at \$20 for 2026 (This total includes an increase from General Assembly and the presbytery. The synod per capita remains the same.) Our 2026 stewardship letter and brochure along with the Per Capita brochure and *Ways to Give to FRP* can be found in the attachments, pages 6-10.

25. Further information regarding our 2026 stewardship campaign will be sent with additional information and specific requests on **Tuesday, September 2** with the request that pledge responses be e-mailed to Elizabeth Cantrell by **January 31, 2026** at the very latest.

26. Gave thanks for the ongoing generosity of Flint River Presbyterians as they contribute to the IGITDaM (I Give Ten Dollars a Month) campaign in order to ensure that the ministry and mission of our presbytery can sustain its measure of excellent support and resourcing.

Thank you for your commitment to supporting the shared mission and ministry of our congregations and campuses throughout middle and SW Georgia. Your generosity makes vital connections and fresh collaboration possible!

Personnel Committee – Robert Harrison, moderator

27. Received a report from our Executive Presbyter, noting that she is committed to remaining in this call for the next 5 years, while also sharing the staff's willingness to do the same.

28. Unanimously approved a 5% raise for Deb Tregaskis, Becky Willis, Toni Hatfield and Elizabeth Cantrell.

29. Unanimously approved a \$1.00 an hour raise for Brittany DiGiammarino and Laura Peiper.

ACTION ITEMS (2)

1. Nominating and Representation Committees' Joint Slate of Recommended Nominees for 2026, noting that this slate of individuals reflects the values of G-3.0103

-Linda Gunn, moderator of Representation with each cluster working independently

NE Cluster

Advisory Board

Janette Bryant	Wayside
Cheryl Betts	Westminster

CME

Rachel Howell	St. Andrews
Brad Miles	Northminster
Minor Vernon	Northminster

COM

Glenn Gilstrap	Thomaston
----------------	-----------

CPM

Sarah Broussard	First (Warner Robins)
Carol Rahn	Teaching Elder

Finance

Al Fatkins	Northminster
------------	--------------

Rep

Cleopatra Simpson	Washington Avenue
-------------------	-------------------

NW Cluster

CME

Joe Slaughter
Joan Gatewood

Sherwood
Phenix City

COM

Paul Kauffmann

Beth Salem

CPM

Matt Cowell
Karen Wetherall

Teaching Elder
Edgewood

Nom

Linda Gunn
Jeremy Spencer
Rosa Stewart

Beth Salem
Carver Heights
Carver Heights

Central Cluster

CME

Pam Temples
Regena Temples

Cuba
Cuba

COM

Faye Isele
Otis Moore

Fort Gaines
Covenant

Nom

Dick Stevens

First (Albany)

Rep

Carla Kennedy
Fred Richmond
Jenny Savelle

First (Albany)
First (Americus)
First (Albany)

Southern Cluster

AB

Jane Shelton

Commissioned Ruling Elder

COM

Dan Mitchell

Teaching Elder

Beth Reid

Trinity (Valdosta)

NOM

Harris Tennyson

Quitman

Chuck Bannister

Moultrie

Rep

Sherrida Crawford

First (Valdosta)

2026-2028 GA Commissioners

Minister

Sommer Bower

Minister Alternate

Danny Dieth

Elder from NE or Central needed

Kari Alderman

Elder Alternate (ditto)

Frazer Loomis

YAAD (between the ages of 17-23)

Abby Dieth

YAAD Alternate

Sam Alderman III

2026-2028 Synod Commissioners

Minister (2026-2028)

Fairy Caroland

Minister (2029-2031)

Paula Hoffman

Elder (2025-2026)

Darryl Pierce

Elder (2027-2029)

Tom McFarland

2026 Presbytery Moderator

Glennie Wicks

2026 Vice Moderator

Ralph Hawkins

PJC

Ken Boyer

2. Committee on Preparation for Ministry (CPM) –Nancy Reimer and Marilyn Tucker-Marek, co-moderators

Recommends that Abbie Ryon become a candidate for ministry within our presbytery. (*Abbie's Statement of Faith can be found in the attachments, pages 10-13, and a timeline of Abbie's faith development can be found in the Addendum.*)

Flint River Presbytery
Bios of Trained Ruling Elder
Graduates
2025

Chuck Bannister, Ruling Elder, First (Moultrie)



Chuck Bannister considers himself to be very fortunate, for him God has always been and always will be.

In July of 2006, God put it on Chuck's heart that he study the Bible. So, Chuck's son gave him a journal to help him "keep his end of the bargain," and work through the Bible for the first time.

Chuck believes he has been called by God to preach his word which he appreciates with great thankfulness and humility. He relishes the moments he has been given to speak the Word, and feels confidently that he is, "right where he

needs to be."

Chuck would like to thank Dan Jeter for his encouragement and for the leadership and friendship of Ralph Hawkins and those who supported him throughout this life-altering TRE program.

Sarah Broussard, Ruling Elder at First (Warner Robins)



Sarah Broussard describes herself as, “the unofficial chaos coordinator of the First Presbyterian Church of Warner Robins (or at least the secretary!)”

Her journey with First began when she was just 8 years old, after her parents made the great escape from Ohio to Warner Robins—thanks to her dad’s military career.

The Broussards joined First in 1977, and Sarah has claimed this congregation as family ever since.

She has two wonderful daughters. Her oldest works for a contract company serving the Air Force. Her youngest is an RN at Atrium Navicent, currently pursuing her Nurse Practitioner degree.

Sarah has two grandsons she adores; one is 14 and the other 11. She also has a wonderful son-in-law who is serving in the Air Force and is three years shy of retirement. Sarah’s husband, Ken, works in Pensacola, FL, at USPS as a safety guy, making sure everything runs smoothly behind the scenes.

Sarah started her TRE journey by doing a favor for a dear friend who unfortunately had cancer and couldn’t attend every meeting. Her intention was to take notes and keep him in the loop. With some encouragement from the ever-supportive Jerry Watts and Buddy Leach, Sarah decided to enroll in the TRE classes for herself. She declares that every TRE class was a joy, filled with amazing teachers and friendships that she cherishes.

Sarah had to pause her studies due to her parents' illnesses, but she was able to join this year’s graduates to complete the TRE program.

David Carter, Ruling Elder (First Valdosta)

David Carter graduated from the University of Georgia with degrees in Psychology and Economics.

He lives in Lake Park with his wife Deb who is a Registered Nurse.

They have three great sons and a wonderful 4 year old granddaughter.



Elizabeth (Britanny) DiGiammarino

Clerk of Session at Trinity (Valdosta) and Small Church Coordinator “for the east side”

Britanny earned her bachelor’s degree in education and her master’s degree in music performance from Valdosta State University (VSU). During her time as a graduate assistant at VSU, she performed at the National Opera Center in New York City and received several lead roles in VSU's Opera Program. In 2016, she secured 2nd place in VSU's Concerto Competition.



In addition to teaching at Valdosta State and other local schools, Britanny has served multiple congregations as a youth leader, pianist, and music director.

Since 2018, she has been the Director of Christian Education at Trinity and is currently working on her final project for her Christian Education Certification. Britanny resides in Valdosta with her husband, Jeff, and their two children, Toby and Arwen. She has developed a passion for preaching and studying Reformed theology. In her spare time, she enjoys being active, painting, creating, and playing "Zelda" on her Nintendo Switch.

Anthony Ellis, Ruling Elder, C.K. Smith

Anthony is the current Co-Moderator of the Flint River Presbytery Advisory Board. He also serves on the board of The Pres House Campus Ministry at Georgia Southwestern University in Americus, Georgia.

He is a lifelong resident of Albany, GA and is a long-time member of CK Smith. Anthony has one daughter, Angelea, and two granddaughters, A'Kea and Amari. He also supports plenty of nieces, nephews and cousins and has earned the endearing titles of Uncle Ant and Uncle/Daddy.

Anthony retired from Mars Chocolate (M&M Mars) after a long career in which he worked in many roles, from a production associate to quality assurance and leadership.

An avid sports fan, in his free time he loves traveling to watch his favorite sports teams in action. Anthony loves volunteering his time with community and youth activities. He has volunteered at high school basketball and youth football concessions and has been a long-time volunteer coach for youth baseball.



Please note that after graduating from the TRE Class, Ray Ford, 2nd Thomasville, experienced some very unexpected and challenging health difficulties and is currently undergoing extended rehab. Cards of encouragement can be sent to:

**Ray Ford
20 San Bonita Way
Havana, FL 32333**

Sharita Hendley, Ruling Elder, First (Columbus)



Sharita graduated from Columbus State University with a bachelor's degree, and Arizona State University with a master's in early childhood education. She worked in the Early Childhood field for almost 15 years.

Now, Sharita works as a Program Mentor in B.S. Computer Science for Western Governor's University.

She is very involved at First Presbyterian Columbus, and Flint River Presbytery. She participates in the choir, handbells, and serves

on multiple committees. She also has also served as Moderator of the Flint River Advisory Board for almost 2 years.

Sharita and her husband Andrew have a 6-year-old son. She loves to spend time with her family, play with her three cats, read, and organize when possible.

Julia Meredith, Ruling Elder at St. Andrews (Macon)

Julia is a life-long (*so far!*) Presbyterian but until the last decade or so, she claims she was little more than a pew warmer. Slowly, she has become more and more involved in church life and ministry over the last few years which has culminated in completing the TRE program through Flint River Presbytery.



Julia currently serves as an elder at St. Andrews and have been authorized by my session to serve communion once a month to our homebound members.

Julia is a retired public librarian/school media specialist. She worked in various positions within public libraries at the state level for several decades and then worked as a media specialist for several decades.

She received an undergraduate degree in History, minor in Political Science from Presbyterian College, a Masters in Library and Information Science at USC, Columbia, SC, a PhD in Information focusing on Research Methodology at Florida State University, Specialist Degree and EdD in Curriculum and Instruction at Piedmont University.

Having completed the TRE program, she hopes to assist her church in local and more broad-ranging outreach missions. She also hopes to help some smaller churches in my area of Georgia to realize their potential and flourish as they spread the love of God.

Julia enjoys praying and working to find ways to accomplish God's goals for the churches He sends her way.

Rita Montgomery, Ruling Elder, First (Columbus)



Rita taught in public schools for forty years in a variety of settings, primarily in elementary grades and in instructional technology.

She grew up Methodist, but joined the Presbyterian church before marrying her husband. She has served as both a deacon and elder at three different Presbyterian churches and is active in the life of the Flint River Presbytery serving for many years on the Committee on Mission and Evangelism.

Rita lives in Columbus, GA with her husband, Mark, who is currently in seminary. Their son, Sam Shields, is an ordained Presbyterian minister serving as a chaplain at the Children's Hospital of Richmond (VA).

Rita jokingly says she took the TRE course out of self-defense, but, on second thought, this might actually be true.

Pam Moye, Ruling Elder, First Columbus



Pam was born in Tennessee, but her family moved when she was an infant to a suburb of Detroit, where they lived until she was 12. Middle school was spent in Tennessee, high school and college in Illinois, but as a young adult she saw the light and moved to Atlanta and has remained in Georgia ever since.

She met her husband Andy shortly after moving to Atlanta, but it took 7 years of dating for them to decide to marry. They have been married for 46 years.

After a wonderful corporate career in Atlanta as a buyer and merchandise manager for a chain of discount stores, Pam (and Andy) retired at an early age and eventually landed in the Columbus area. Both before and after retirement, she served as a volunteer and board member for several non-profits, ranging from a professional theater company to a historical commission, but now devotes her volunteerism to Flint River Presbytery and its churches. She has served on the Committee on Mission and Evangelism for about 15 years in a variety of roles, including her current role as Volunteer Staff Associate. She was honored to serve as Flint River Presbytery moderator several years ago.

She has a particular interest in global missions and traveled to Russia on a mission trip in 2001 and has since been to Guatemala on 5 FRP mission trips.

Andy and Pam live in Columbus with their dog Jenna. They are members of 1st Presbyterian of Columbus.

Laura Peiper, Ruling Elder, Cairo

Laura earned a Doctorate in Educational Leadership prior to her retirement from teaching in the public schools. Upon her retirement, she has trained as a Godly Play teacher and continues to enjoy teaching in a multitude of ways.

Laura's days are filled with activities and traveling with her 5 children and 8 grandchildren. She and her husband, Larry, enjoy traveling and hiking together.



During her free time, Laura loves sewing dresses and quilts for different ministries. She also enjoys reading, crafting, cross stitch and hand embroidery.

Laura and Larry are members at First (Cairo).

Jennifer Shepherd, Ruling Elder and Clerk of Session, First (Valdosta)



Jennifer Shepherd was born in Louisville, KY, raised in Port Orange, FL, and currently resides in Lake Park, GA. She attended Florida State University and holds both a Bachelor of Arts in International Affairs and a Master of Science in Management – Risk Management Insurance.

She has spent her entire career working in youth development- primarily in the field of camping, beginning as a counselor with YMCA camps and eventually becoming Camp Director with the Florida Sheriffs Youth Ranches. She currently works in

Quality Improvement ensuring that all programs, including camps and residential group care, meet licensing and accreditation requirements.

Jennifer is a member of First Presbyterian Valdosta and serves as Clerk of Session. She enjoys reading, pub trivia, participating in runDisney events at Disneyland and Walt Disney World, watching entirely too much television, and spending time with her 8 rescue cats.

Joe Slaughter, ruling elder at Sherwood in Columbus

Joe is a lifelong resident of Columbus, Georgia, receiving a Bachelor of Business Administration degree in 1977 from Columbus College (now Columbus State University). Joe received his CPA certification in 1979, practicing in a firm for over 20 years. He currently serves as Director of Internal Audit for a local School District.

Joe has enjoyed serving in a variety of volunteer positions at various congregations over the years along with non-profits and professional organizations.

Few have been as fulfilling as assisting his wife in transportation of Girl Scouts and equipment and serving in the “esteemed” position of *Troop Cookie Taster!*

Currently, he serves as Ruling Elder and Treasurer at Sherwood Presbyterian.

Over the years, he has enjoyed tennis, camping, and fishing, and he still enjoys outside activities whenever possible.

Joe is blessed with a daughter, Crystal, and a granddaughter, Ashley, as well as a wonderful church family at Sherwood.



Floyd Whitehead, Ruling Elder, Wayside

Floyd graduated from University of Southern Illinois at Carbondale with a bachelor's degree in Workforce Education and Training (Magna Cum Laude).

During his time in the Navy, from 1979-2009, Floyd volunteered to participate in religious ceremonies and projects to help promote goodwill in foreign countries.

A member of Wayside Presbyterian since birth, Floyd has been a Ruling Elder for five years. He participates on multiple committees and has served as a commissioner for several Flint River Presbytery meetings.



His next goal is to be ordained as a chaplain so he can carry on the work of the Lord at the Georgia War Veterans Home in Milledgeville, Georgia

Floyd and his wife Connie have 3 grown children and 7 grandchildren. He loves to spend time with his family, play with Ruby the Wonder dog (my 6-pound spoiled rotten Shi Tzu,) read, and study the Bible.

Bill Wicks, Ruling Elder, (Trinity Valdosta)



Bill, his wife Kelly, and daughters Glennie and Lorrie are members of Trinity Presbyterian Church in Valdosta. Bill and Kelly have both recently retired from pulp and paper manufacturing and Echols County Schools respectively. They enjoy traveling the USA and showing the heart of Jesus to people in various ways through Trinity Presbyterian and Flint River Presbytery.

Bill is an ardent fan of his alma mater, the North Carolina State University Wolfpack. He is a long time elder and confirmation class teacher at Trinity and now serves on the FRP Finance

Committee.

Bill enjoys visiting and praying with fellow church members. After the Trained Ruling Elder program, Bill feels led pursue that further at Trinity and in Flint River Presbytery.



Attachments
to
Accompany
Flint River Presbytery
148th Stated Meeting Handbook



August 2, 2025

Name	Address	Cell Phone	Email	Cluster	Notes on Availability
Teaching Elders					
John Akers	500 Canna Drive, Valdosta, GA. 31602	229-305-5825	jakers2@bellsouth.net	Southern	willing to preach in Southern Cluster (near Valdosta) only
Maretta Arnold-Franklin	622 Camano Way, McDonough, GA 30253	<u>706-580-3172</u>	marettaarnoldfranklin@gmail.com	outside FRP bounds	1st and 2nd Sundays of the month in NW and NE cluster
Fairy Caroland	212 Murphy Mill Road, Apt. C-2, Americus, GA	615-944-8972	fairycaroland@gmail.com	Central	doesn't have car, so transportation would need to be close to Americus
Colleen Cook	6328 Fox Chapel Drive, Columbus, GA 31904	678-707-1220	cujocook@gmail.com	NW	NW cluster and SW corner of Southern cluster
Matt Cowell	11 W 11th Street, Apt 17, Columbus, GA 31901	706-575-7077	cowell.matthew@gmail.com	NW	willing to preach in any FRP cluster with enough advance notice
Rick L. Douylliez	110 Nancy Drive, St Mary's, GA	912-674-0142	calvinist@tds.net	outside FRP bounds	available summer and fall 2025
Connie Happell	8525 Blackmon Road, Midland, GA 31820	913-205-2363	conniehappell@gmail.com	NW	willing to preach anywhere occasionally with advance notice
Paula Hoffman	113 Vesta Drive Warner Robins, GA 31088	478-747-3401	revphoffman513@gmail.com	NE	most able to serve in NE cluster
Sid Leak	403 Clyde Ave, Valdosta, GA 31602	229-650-1759	sid.leak@gmail.com	Southern	willing to preach in any FRP cluster with enough advance notice
Jerry Little	103 Riverview Drive Bainbridge, GA 39817	229-246-4920	littlegerald27@hotmail.com	Southern	willing to preach in Central and Southern clusters
Karen Mitcham	173 Cedarline Drive, Gray, GA 31032	478-986-7266	kbev55@gmail.com	NE	willing to preach in NE cluster only
Carol Rahn	109 Francis Drive, Macon, GA 31216	210-819-3470	revrahn@gmail.com	NE	willing to preach in NE cluster
Debra Tregaskis	527 Grove Lane Kathleen, GA 31047	229-942-8304	deb@flintriverpresbytery.org	NE	willing to preach in any cluster with 2-3 months advance notice
Lindsey Williams	1150 Mac Thompson Rd Cochran GA 31014	804-484-5616	pastorljwilliams@gmail.com	outside FRP bounds	willing to preach in NE cluster only
Ecumenical Partners					
Dena Hobbs, Episcopalian	417 Morgan Ranch Circle Bonaire, GA 31005	478-918-5497	denadouglasshobbs@gmail.com	NE	willing to preach in NE cluster only
Michael Ruffin, Cooperative Baptist	387 Luton Place Macon, GA 31210	229-457-1240	ruffinml@gmail.com	NE	preaches 2 times/month at Wayside; willing to preach in NE cluster only
Bryan Whitfield, Cooperative Baptist	1423 Fern Drive, Macon, GA 31210	770-380-0196	bryan.whitfield@gmail.com	NE	NOT available until Fall 2025
Darrell Pursiful, Cooperative Baptist	723 Captain Kell Drive, Macon, GA 31204	478-731-8979	djpursiful@gmail.com	NE	preaches 2 times/month at Wayside; willing to preach in NE cluster only
Trained Ruling Elders					
Britanny DiGiammarino	3519 Cherokee Trail, Valdosta, GA 31602	229-740-9993	britd@flintriverpresbytery.org	Southern	available to preach in any FRP cluster
Linda Gunn	4021 Alton Street Columbus, GA 31903-2962	706-289-6003	suebmore@hotmail.com	NW	available to preach in any FRP cluster
Raymond Haggard	510 Meadowbridge Dr. Warner Robins, GA 31093	478-442-6852	Wr.haggard2@cox.net	NE	available to preach in NE cluster only
Robert Harrison	64 24 th Street, N. E. Cairo, GA 39828	229-378-4546	rhharrison2000@yahoo.com	Southern	available to preach in Southern cluster only
Elizabeth "Beth" Holloway	141 Walnut Ridge Drive Macon, GA 31211	478-283-8731	Daronandbeth11@gmail.com	NE	available for NE and NW clusters primarily
Patti Kauffmann	6722 Audubon Drive Columbus, GA 31909	706-566-3475	kauffmannpatti@gmail.com	NW	available for NW and Central clusters only
Paul Kauffmann	6722 Audubon Drive Columbus, GA 31909	706-566-3434	paulekauffmann@yahoo.com	NW	available for NW and Central clusters only
Frank Kilgard	602 W. Alden Avenue Valdosta, GA 31602-2814	229-244-8275	kilgard@vwave.net	Southern	available to preach in the Southern cluster only
Rhonda Mallory	1978 Vining Circle Macon, GA 31204-6253	478-745-8537	ron41mal@hotmail.com	NE	available for NE Cluster only
Tom McFarland	333 Daniel Street, Americus, GA 31709	229-942-0224	mcfarlandthomasr@gmail.com	Central	available to preach in any FRP cluster
Pete Sanders-Nesbitt	3911 Crestview Drive, Columbus, GA 31904	706-315-2335	psanders.nesbitt@gmail.com	NW	available for NW cluster
Joe Slaughter	4146 Durwood Drive, Columbus, Georgia 31907	706-566-3241	<u>jslaughter565147@aol.com</u>	NW	willing to preach ANYWHERE in FRP at the last minute!
Grant Wright	2592 Catalina Court, Valdosta, GA 31601	229-660-2110	grant1951@sbcglobal.net	Southern	available for the Southern cluster

Name	Address	Cell Phone	Email	Cluster	Notes on Availability
Campus Directors					
Melissa Coleman	119 B North Ashley Street, Valdosta, GA	229-548-1707	melissabcoleman15@gmail.com	Southern	available with months of advance notice to talk about the Center @ VSU
Aaron Lickliter	1123 Broadway, Apt. G, Columbus, GA 31901	609-216-5441	aaronlickliter@gmail.com	NW	available with months of advance notice to talk about the Abbey @ CSU
Katie Minich	136 Taylor Street, Americus, GA 31709	229-220-1184	katieminich@gmail.com	Central	available with months of advance notice to talk about the PresHouse @ GSW

Board of Pensions (BOP)

www.pensions.org

This agency provides benefits and assistance for those serving the denomination, either as ordained ministers or staff members of PC(USA) congregations and organizations.

Here's a more detailed look at the resources available to assist board members:

- **Assistance Program** provides financial help to active and retired church workers and their families facing financial hardship due to **natural or human-inflicted disasters or financial emergencies**. Grants are also available for other life events such as **children's transition to college** or the **Clergy Wellness Support which provides funding up to \$5K for those with effective salaries below \$80K**
- **Disability Benefits** offers income replacement for ministers and church workers who become temporarily or permanently disabled by providing 70% of an employee's salary. **This can be used to help a congregation in time of family leave or parental leave so that a congregation does not bear the financial responsibility alone.**
- **Death Benefits** provides financial support to the family or beneficiaries of a deceased church worker.
- **Retirement Savings Plan** helps ministers and plan members save for retirement through contributions and investment options.
- **Pension Plan** offers a monthly income to retired plan members based on their service and contributions.
- **Medical Plan** provides health insurance options for ministers and church workers, including medical, dental, and vision coverage.
- **Employee Assistance Program (EAP)** offers confidential counseling and support services for personal and work-related issues.
- **Educational Assistance** provides continuing education and professional development for ministers and church workers, such as **Lifelong Learning** which offers holistic educational opportunities during specific stages of life, career, and ministry.
- **Sabbatical grants** provides up to \$5K for those with effective salaries below \$80K. Sabbatical grants can also be used to provide funding for **families with adopted children** in order to help them return to the children's country of origin.

Notes for Deb to share with pastors, sessions, and congregations:

Assistance Programs

- Ministers' Debt
- Medical and Long-Term Disability
- Retirement Grant, including a dental benefit

Medical Plan

- 1.) Covenant Package
- 2.) Congregational Pastors' Package
- 3.) Transitional Pastor's Participation

*Line out Differences clearly based on "INFORMATION for Presbytery Leaders 2025"

--this includes medical insurance, pension, temporary disability and death benefits

--Care Navigation = key to help members get the right care at the right price at the right time

- Preventative focus through Call to Health, Teladoc, Diabetes 2 coaching, Centers of Excellence for pastoral wellness grants
- Dental Plan and Vision Plan not required – but available



Debra Tregaskis, Executive Presbyter
Rebecca Willis, Stated Clerk
Toni Hatfield, Bookkeeper
Elizabeth Cantrell, Ministry Associate

September 2, 2025

Dear Ruling Elders,

It is a delight to remind you that your congregation is part of a Presbyterian family which includes 38 congregations and 4 campus ministries. *Together*, we are more than 2000 Presbyterians strong in middle and SW Georgia and eastern Alabama! Although our presbytery and the churches within our bounds have undergone tremendous change, so too have we been given tremendous opportunities to be the church in creative and engaging ways. As always, our presbytery's focus remains unwavering: to encourage, equip, and empower *your congregation* as it seeks to be a strong witness to Jesus Christ in the world.

We hope you'll take a moment to review this information, so you are ever aware of the crucial ministries your giving makes possible.

Helpful Facts re. our Annual Income:

- 52% (or \$315,000) of our annual budget comes from **voluntary congregational pledges**
- 41% (or \$256,450) comes from **special funds** which have been generated through the generosity of Presbyterians through bequests, such as the Walter Flint Fund and the Jerry Lee Watts Campus Endowment Fund. *ALL of these funds go directly to support either congregational creativity with mission grants or campus ministries. These funds "pass through" the operating budget of our presbytery to assist congregations and campuses.*
- 5% (or nearly 32K) **"passes through"** our budget as General Assembly and synod per capita.

You can see how this denominational per capita is used at [by reviewing our 2025 Per Capita Amount per Member sheet on our website](#). When we pay our per capita, we are funding our commissioners to give voice at national gatherings. Our commissioners make decisions which impact the Board of Pensions, Presbyterian Foundation, Presbyterian Investment and Loan Program, Presbyterian Mission Agency, Office of the General Assembly, and Presbyterian Publishing Corporation. These mission agencies provide *valuable* and *free* services to our presbytery through one-on-one congregational consults and presbytery-wide trainings.

- 2% comes from **presbytery per capita**, which remains within the presbytery to assist with 75% of our administrative expenses which enable staff to communicate effectively with the entire presbytery.
- **individual donors** provide miscellaneous income, which varies from year to year.

2800 Old Dawson Road, Suite 2, Box 312 , Albany, GA 31707

Helpful Facts re. our Annual Expenditures based on voluntary congregational pledges:

- 40% is used to provide the following **to enhance congregational health:**
 - Guidance for Sessions in every season
 - Intentional support and resources for installed clergy, CREs, TREs, and ruling elders, which includes pastoral check-ins, annual retreats, educational and relational events
 - Regular collaboration to equip and empower leaders through coaching, consulting and resourcing
 - Online and in-person educational events and experiences for Presbyterians of every age and background
 - Shared mission opportunities and regular communications like “Tuesday Treasures”
- 40% is used to offer focused training and support for **congregations during any sort of transition**
 - Pastoral Nominating Committee (PNC) training, support, and resourcing
 - Vigorous consultation and guidance from staff and the Committee on Ministry whenever there is need
 - Consistent resourcing around sustainability, collaboration and networks
- 20% is used to undergird our **mission outreach** at 4 college campuses as well as to show support for our international **mission partners**

As you pray, plan and prepare your 2026 budget, we hope you’ll prayerfully consider our request. In order for our presbytery to continue to offer the support, expertise, and care to which our congregations are accustomed, **it requires \$175/member in pledge support. Therefore, a congregation with 20 members would be asked to voluntarily pledge \$3500.**

To that end, know that a member of our Finance Team will reach out to your Session moderator and clerk of Session between September-November to discuss our pledge request. Know that Finance Committee members are glad to meet in-person, via Zoom, or simply provide additional e-mail information as needed. We are glad to be present in the way that will be most helpful to you.

We offer this to you with gratitude and joy and look forward to hearing from you by **January 31, 2026.**

The Finance Team of Flint River Presbytery

Finance Team Members include the following volunteers who welcome your comments or questions!

Demetrise Battle of Beth Salem (Columbus) at 706.905.2693 or demetrisebattle@yahoo.com ***Co-Moderator**

Ginny Sanders Bolton of Elmodel at 229.886.6274 or sanders.virginia@gmail.com

Royce Coleman of First (Valdosta) at 229.460.1707 or rolls930@gmail.com

Darryl Hawkins of Americus at 229.942.8770 or dlhawkins62@gmail.com

Bill Krenson of Americus at 229.942.7493 or bkrenson@gmail.com ***Treasurer**

Frazer Loomis of First (Columbus) at 706.464.6993 or floomis54@gmail.com

Nita McCord of Northminster (Macon) at 478.957.1947 or macontime1@gmail.com ***Recorder**

Mac Perkins of Thomaston at 770.363.2924 or mperk333@gmail.com

Robert Morgan of Phenix City at 706.289.7084 or morganrl56@yahoo.com

Dick Shelton of First (Valdosta) at 229.292.4786 or richard.shelton@outlook.com ***Co-Moderator**

Bill Wicks of Trinity (Valdosta) at 229.548.3071 or wicksw@bellsouth.net

2800 Old Dawson Road, Suite 2, Box 312 , Albany, GA 31707

Per capita is part
of the glue that holds
Presbyterians together

Per capita is a set amount of money (apportionment) per member that congregations pay to the larger Presbyterian Church. Each Presbyterian shares in the benefit of the PC(USA)'s system of shared life, so every Presbyterian is asked to share the expenses associated with coordinating and performing the functions of that system.

Why per capita?

The Book of Order states that per capita exists as a way for all Presbyterians to share costs that belong to the whole church, to “demonstrate the unity and interdependence of the church” (G-3.0106).

Per capita exists to hold Presbyterians together so the whole church may share equitably in those things that make us Presbyterians:

- our theological identity
- our congregational connectedness
- our system of councils that allows ruling elders and teaching elders together *equally* to discern the mind of Christ
- our ecumenical connections that make us part of the church universal

Per capita allows us to work with other congregations to further the mission of Jesus Christ around the world.

*“To each is given the manifestation of the Spirit
For the common good.: ~ I Cor. 12:7*

For more information, see pcusa.org/percapita



Per Capita

Per Capita for 2026 = \$20 total

General Assembly	\$ 11.26
Synod of the South Atlantic	\$2.50
Flint River Presbytery	\$6.24

Our presbytery's Finance Committee remains deeply grateful for our congregations' generosity and continues to trust in God's providence.

Per capita is a fundamental way in which the nearly 8500 congregations of the Presbyterian Church (U.S.A.) are connected to participate in the work of the wider church.

Because it is rooted in the connectional and covenantal nature of the Presbyterian church, as affirmed by the ordination vows taken by ruling elders and teaching elders, per capita could be called a **Presbyterian Covenant Community Fund**.

What is "per capita"?

The official definition:

"Per capita is an opportunity for all communicant members of the Presbyterian church through the councils to participate equally, responsibly, and interdependently by sharing the cost of coordination and evaluation of mission; and of performing ecclesiastical, legislative, and judicial functions that identify a Reformed Church, while at the same time strengthening the sense of community among all Presbyterians." (*GA Minutes, Part I, 1995*)

How much?

The annual per capita is a combined request from a congregation's presbytery, synod, and the General Assembly - based on their respective budgets for the coming year. **Our presbytery's per capita rate is recommended by our Finance Committee and covers between 50-75% of our administrative expenditures.**

Paying "per capita" is similar to:

- contributing one's dish to a potluck meal
- pitching in with other passengers to pay for gasoline for a road trip
- paying to be connected to the Internet
- paying your part of the tab when a group of friends goes out to eat together

What Flint River Presbytery Per Capita Supports

- presbytery meeting expenses
- auditing financial records
- maintaining the presbytery website and computers
- office supplies, postage, phone, and administrative expenses

What Synod of the South Atlantic Per Capita Supports

- fulfilling the constitutional and administrative responsibilities assigned to the Synod in the Book of Order
- expenses for bringing commissioners to Synod meetings
- training events for congregational transformation
- covenants with church-related institutions within synod bounds
- facilitating conversation between the councils of the church

What General Assembly Per Capita Supports

- expenses for bringing commissioners and advisory delegates to a General Assembly, as well as holding the meeting
- the cost of bringing together presbytery and synod church leaders for training events
- tools to develop and administer ordination exams
- the ministerial call system and other work that helps all Presbyterians discern their vocation
- production and distribution of the Book of Order, the Book of Confessions and other GA publications
- a Presbyterian presence at ecumenical groups in the U.S. and worldwide.

Ways to Give



I Give Ten Dollars a Month "IGiTDaM"

Decreases potential budget shortfall. If individuals give \$10/month or \$120/year, our Executive Presbyter will donate 10% of the annual receipts from personal funds to support PC(USA) missions.

Creativity Fund

Underwrites small projects to encourage congregations in missional and experimental mindsets. Advisory Board developed this fund 4 years ago and gave regularly to grow it.

Jerry Lee Watts Campus Ministry Fund

Assures the long-term presence of campus ministry in our presbytery at a variety of college campuses. This fund ensures our current ministries remain and, in time, new ones may be initiated.

Disaster Fund

Assists congregations and campus ministries with deductibles during unexpected natural disasters. Up to \$1500 is available for each faith community depending on fund availability.

Legacy Fund

Supports the salaries of presbytery personnel to ensure vital, stable, and long-term support for our congregations/campuses. Building this fund supports cost-of-living raises and continued benefits for staff, without creating budget strain.

Harry Halpert Fund

Provides grants to small congregations, under 100 members, facing emergency repairs to their buildings.

Montreat Fund

Designed to grow funds for our annual youth conference so that the event is affordable for all youth and chaperones who wish to attend.

Technology Fund

Donates funds to congregations of any size who are striving to update current technology for the sake of enhanced worship, fellowship, and mission experiences.

Inquirer Abbie Ryon

Statement of Faith



I believe in God the creator. God the creator holds many titles to describe God's attributes. God the creator is also God the father, God the mother, God the master, God the maker, God the Almighty, God the just, and countless others. God has no gender. God always has been and always will be. Without God, there is nothing.

I believe in Jesus Christ, the son of God. I believe in the holy miracle of his birth. I believe in his ministry and teachings of love. I believe in the crucifixion and that Jesus was buried. I believe he rose again three days later and continued his ministry until his ascension into heaven forty days later.

I believe in the Holy Spirit and the mysterious nature of it. I also believe God is a triune God. I believe that all humans are sinful and incapable of being "good enough" for God. I also believe that despite our sin, God chose to save us through his grace. I believe this grace is undeniable and continually draws us closer to God. I believe that God sent God's son to earth and that he died on the cross to save us all from our sins as the truest act of grace. I believe God gave us free will and that we are called to accept the gift of God's saving grace, but that every choice we make works in God's Will, meaning that God's grace is freely given to all and is for all, no matter what. I believe that God has preserved God's saints and that we will one day all be united again.

I believe in the mystery of communion as a joining with the saints both before and after us. I believe in the catholic church and that God's grace is all that is needed for salvation, regardless of denomination. I believe that it is right and good to study and grow personally in one's faith journey and to explore what faith means to them. I believe that one day we will see a restored heaven and Earth when Jesus one day returns.

I also believe that to show one's faith is to be kind and justice oriented. We are called to be Christ-like and in that call we must also speak out against injustices and inequalities. Doing missions work is essential to faith, especially when the mission-field at home. As a person of faith, I want my faith to be known through my actions, and justice work is one of those actions.

Statement on Sense of Call

I am still called to small church ministry, very likely as a solo pastor. This has been the basis of my call since I chose to go to seminary and it has not changed. It has, however, evolved somewhat. I still feel called to ordination within the PC(USA) church. I want to serve a congregation where I can know everyone and know them all well. I would love to find a call either somewhere in the southeast or somewhere near Austin. However, as I have been in school I have come to realize that patience is needed even more than I had realized. The perfect call may not be available when I am released to seek a call by the CPM and the presbytery.

During my SPM (Supervised Practice of Ministry), I did feel as though my call was confirmed. I served at a 300-400 member congregation and while I enjoyed my time (it was at the church I attend here in Austin), I hated that when a prayer request came in, I was not immediately sure who the members were, despite it being my home congregation. I also could not always tell if we had visitors as I did not know the faces of everyone who attends. I found myself yearning for a smaller congregation where I could get to know each member on a deeper level, just as I had always envisioned. I did go into the experience with an open mind, but still found my call confirmed by this experience.

Recently I have started working in the library on campus and have found a passion for librarianship. My boss (the academic librarian) has an MDiv as well, so I asked him one day about his choice to become a librarian instead of pursuing ordained ministry. He explained it to me and I realized that while I did not feel the exact same way, I did have a pull toward librarianship. Therefore, I currently plan on returning to school after graduation to receive a Master of Library Sciences. While this could delay my ordination, I do feel as though it

is the right move for interim work. I trust that the right call will make itself available to me at the right time, all within God's will for my life and others around me. I cannot wait to see where I go from here!

ADDENDUM

In this addendum, you will find:

- Abbie Ryon's Timeline of Faith Development
- Publicity for our FRP-wide Monthly Bible Study led by Small Church Coordinator, Laura Peiper
- Resource page from Small Church Coordinator, Brittany DiGiammarino
- June Financial Reports
 - Per Capita
 - Pledge
 - Operational Budget Performance
 - Statement of Financial Position
 - Narrative Report of Special Funds
- New Hope Administrative Commission Minutes (May)
- New Hope Administrative Commission Minutes (June)

A Timeline of Inquirer Abbie Ryon's relationships within Flint River Presbytery

Academic Year 2016/2017

Fall 2016 – Abbie Ryon started participating in UKirk Campus Ministry at Mercer University in the ministry's very first year, when Abbie was a college sophomore. Abbie felt the welcome, and extended it exuberantly to others on campus, constantly offering an invitation and a big, joyful welcome. Abbie became actively involved in the worshiping life and Wednesday night programming at Forsyth Presbyterian Church. **Abbie joined Forsyth Presbyterian Church as a member.**

Spring 2017 – Abbie became actively involved in the worshiping life and Wednesday night programming at Forsyth Presbyterian Church.

Academic Year 2017/2018

Fall 2017 – Abbie offered a carpool to fellow UKirk campus ministry participants to and from Forsyth Presbyterian Church for Sunday morning worship. Abbie served as the UKirk campus ministry student president, helping Pastor Marilyn plan Bible studies, worship services, and continuing to practice offering a warm welcome to everyone who participated.

January 2018 – Abbie attended College Conference at Montreat Camp and Conference Center with UKirk campus ministry. **Abbie met with the Forsyth Presbyterian Church session regarding a sense of call and desire to enroll as an inquirer. The session unanimously approved and recommended this enrollment.**

Spring 2018 – Abbie participated in Flint River Presbytery's *Celebration of Faith*, and then late that spring met with Flint River Presbytery's Committee on Preparation for Ministry (CPM). Abbie was informed of the psychological evaluation requirement to come under care.

Academic Year 2018/2019

January 2019 – **Abbie was nominated, elected, and ordained and installed as a ruling elder to the session of Forsyth Presbyterian Church.** Abbie stepped into the role of ruling elder with warmth, diligence, and enthusiasm. Abbie also attended presbytery meetings as able and even assisted in creating short skirts for the body.

Spring 2019 -- Abbie graduated from Mercer University.

Academic Year 2019/2020

Abbie worked at a Starbucks in middle Georgia post-graduation. Abbie continued to be actively involved in the worshiping life and Wednesday night programming of Forsyth Presbyterian Church.

February 2020 – Abbie participated again in *Celebration of Faith*, a retreat of Flint River Presbytery.

Summer 2020 – Abbie took on online worship production responsibilities at Forsyth Presbyterian Church during the pandemic and supported offering worship in a way that was as safe and accessible as possible.

Academic Year 2020/2021

January 2021: **Abbie Ryon stood for and was elected as clerk of session for Forsyth Presbyterian Church.** Pastor Marilyn provided support and mentoring as Abbie took on this responsibility and executed it with diligence and energy.

Summer 2021: Abbie Ryon, as involved member, session member, and clerk took on additional responsibilities during Pastor Marilyn's sabbatical.

Academic Year 2022/2023

Fall 2022: **Abbie Ryon matriculated at Austin Presbyterian Theological Seminary, in Austin, TX.**

Spring 2023: Abbie discerned that a four-year plan for the Master of Divinity program was a better fit and a more sustainable pace, supporting Abbie's need to work at Starbucks during seminary.

Academic Year 2023/2024

Fall 2023: Rev. Dr. Glenn Gilstrap, as the moderator of the Committee on Preparation for Ministry, approved Abbie Ryon doing the psychological evaluation required before enrolling as an inquirer under care with Flint River Presbytery remotely. Abbie's psychological evaluation was conducted, and the results provided to CPM.

January 2024: CPM reviewed Abbie's psychological evaluation.

February 2024: Abbie took and passed the Bible Content Exam (permission was granted for Abbie to take this exam by Rev. Dr. Glenn Gilstrap).

March 2024: **The Committee on Preparation for Ministry met with Abbie via Zoom for an honest and in-depth conversation regarding Abbie's desire to be enrolled as an inquirer under care of Flint River Presbytery via Zoom.** After meeting with Abbie, the Committee developed a plan for the first stage of Abbie's care, including that Abbie would spend a minimum of one year in the inquiry phase, and **voted unanimously to receive Abbie as an inquirer under care of Flint River Presbytery.**

Summer 2024: Abbie completed a supervised ministry course for credit at Austin Presbyterian Theological Seminary, balancing this academic requirement, and requirement of Flint River Presbytery's Committee on Preparation for Ministry, with a Starbucks job to provide income and health insurance. The evaluation from this supervised ministry course was provided by Abbie's supervisor to the Flint River Presbytery's Committee on Preparation for Ministry.

Academic Year 2024/2025

Spring 2025: Abbie began to communicate with CPM co-moderator and Abbie's CPM liaison Colleen Cook regarding Abbie's desire to move to candidate under care. Abbie's materials were not ready for the stated meeting date in May.

June 29, 2025: Abbie met with the Forsyth Presbyterian Church session to discuss receiving their recommendation for Abbie to move from inquirer to candidate in the preparation for ordination process. Abbie provided an academic transcript, supervised ministry evaluation from the summer of 2024, a written statement of faith, and statement on sense of call. **The session met with Abbie via Zoom, and after a good conversation, voted unanimously to recommend Abbie move from inquirer to candidate.**

July 7, 2025: Abbie met with the Committee on Preparation for Ministry for the purpose of requesting moving from an inquirer to a candidate under care. Abbie provided the documentation which the session received, and the session of Forsyth Presbyterian Church provided a letter of recommendation. **After a rigorous and faithful conversation with the Committee during which Abbie was questioned on all manner of aspects of academic, professional, and personal development and growth, the CPM unanimously voted to recommend Flint River Presbytery enroll Abbie as a candidate for ordination as a Minister of Word and Sacrament under care of Flint River Presbytery.**

*Join us on zoom for a
presbytery-wide Bible Study*

Finding Resilience, Joy, and Our Identity in Jesus Christ

*Starting Tuesday, Sept 9
from 6:30-8pm and every
2nd Tuesday until May.*

Study Book Required
To reserve a copy, contact Laura at
laura@flinriverpresbytery.org



www.flinriverpresbytery.org

Christian Nurture Resources Quicksheet

Britanny Digiammarino

Flint River Presbytery

Association of Smaller Congregations

A LIST OF MY FAVORITE RESOURCES AS A CHRISTIAN EDUCATOR.

CHILDREN'S RESOURCES

- **Buck Denver asks... What's in the Bible?**



WHAT I LIKE:

There is so much information on historical context, you can watch it more than once.

You can create a "quiz" sheet on each episode and have a trivia game afterward.

Pairs well with ministry-to-children lessons.

Find it on Amazon.

- **Ministry-to-Children: Free Children's Ministry Resources**

HUNDREDS OF LESSONS – CAN BE EDITED TO FIT SPECIFIC CLASS NEEDS – GREAT FOR TEACHERS WHO LIKE TO FOLLOW A SCRIPT OR OUTLINE.



Click the image to visit the site.



INTERGENERATIONAL

- **Conversation Starters**



WHAT I LIKE:

Great for intergenerational events/table conversations.

You can get these from Amazon or make your own using ChatGPT.

- **[PCUSA Intergenerational Resources](#)**

Christian Nurture Resources Quicksheet

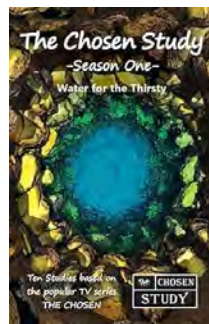
Britanny Digiammarino

Flint River Presbytery

Association of Smaller Congregations

PCUSA YOUNG ADULT RESOURCES

- [Supporting Young Adults PDF](#)
- [Sabbath Practices Ministry Kit PDF](#): Practicing prayer, storytelling, hospitality, service and retreat with young adults.
- **The Chosen**



The Chosen Series and study can be found on Amazon. Click [here](#) for Season One book study.

WHAT I LIKE:

The study book explains how the show occasionally deviates from the Bible and why.

The studies offer a variety of activities that address all learning styles.

Suitable Bible study for ages 12+

FLINT RIVER PRESBYTERY - PER CAPITA 2025
as of June 30, 2025

	CHURCH	Per Capita	Paid YTD	% Paid	Over/ -Under
1	Albany/First	2,625.00	2,626.00	100%	1.00
2	Americus/First	1,067.50	1,105.00	104%	37.50
3	Barnesville	350.00	204.00	58%	-146.00
4	Beth Salem	560.00	525.00	94%	-35.00
5	Boston	595.00	542.50	91%	-52.50
6	C. K. Smith	350.00		0%	-350.00
7	Cairo	402.50	403.00	100%	0.50
8	Camilla/First	105.00		0%	-105.00
9	Carver Heights	700.00	700.00	100%	0.00
10	Columbus/First	6,265.00	2,610.40	42%	-3,654.60
11	Cordele/First	315.00		0%	-315.00
12	Covenant	2,415.00	1,006.25	42%	-1,408.75
13	Cuba	490.00		0%	-490.00
14	Cuthbert/First	490.00	495.50	101%	5.50
15	Dawes	350.00	350.00	100%	0.00
16	Dillon Road	297.50	315.00	106%	17.50
17	Edgewood	1,260.00	1,260.00	100%	0.00
18	Elmodel	245.00	245.00	100%	0.00
19	Forsyth	787.50	196.75	25%	-590.75
20	Fort Gaines	297.50	297.00	100%	-0.50
21	Fort Valley	157.50	153.00	97%	-4.50
22	Korean/Columbus	875.00	875.00	100%	0.00
23	Moultrie/First	5,215.00	5,215.00	100%	0.00
24	Northminster	3,325.00	1,662.48	50%	-1,662.52
25	Phenix City	332.50		0%	-332.50
26	Quitman/First	437.50	650.00	149%	212.50
27	Sherwood	210.00	87.60	42%	-122.40
28	St Andrews	735.00	735.00	100%	0.00
29	St Paul	122.50	122.50	100%	0.00
30	Thomaston/First	1,137.50	1,137.50	100%	0.00
31	Thomasville/2nd	700.00	700.00	100%	0.00
32	Tifton/First	840.00		0%	-840.00
33	Valdosta/First	1,435.00		0%	-1,435.00
34	Valdosta/Trinity	1,837.50	1,837.50	100%	0.00
35	W-R/First	647.50	650.00	100%	2.50
36	W-R Westminster	1,050.00	840.00	80%	-210.00
37	Washington Ave	752.50		0%	-752.50
38	Wayside	542.50	542.50	100%	0.00
	Totals	40,320.00	28,089.48	70%	-12,230.52

**FLINT RIVER PRESBYTERY - PLEDGES
2025**

	CHURCH	2025 Pledge	1/12th pledge	Giving as of May 31, 2025	% of pledge rec'd to date
1	Albany/First	7,250.00	604.17	3,700.00	51%
2	Americus/First	6,000.00	500.00	4,000.00	67%
3	Barnesville	300.00	25.00	600.00	200%
4	Beth Salem	1,500.00	125.00	1,200.00	80%
5	Boston	6,000.00	500.00	6,000.00	100%
6	C. K. Smith	500.00	41.67		0%
7	Cairo	4,125.00	343.75	4,125.00	100%
8	Camilla/First	1,000.00	83.33		0%
9	Carver Heights	6,000.00	500.00	3,000.00	50%
10	Columbus/First	85,000.00	7,083.33	43,022.06	51%
11	Cordele/First	750.00	62.50		0%
12	Covenant	5,000.00	416.67	2,083.35	42%
13	Cuba	3,800.00	316.67		0%
14	Cuthbert/First	5,650.00	470.83	5,625.00	100%
15	Dawes	3,000.00	250.00	3,000.00	100%
16	Dillon Road	3,400.00	283.33	1,704.00	50%
17	Edgewood	16,500.00	1,375.00	8,250.00	50%
18	Elmodel	3,248.00	270.67	3,248.00	100%
19	Forsyth	4,500.00	375.00	1,125.00	25%
20	Fort Gaines	3,000.00	250.00	3,000.00	100%
21	Fort Valley	3,500.00	291.67	3,500.00	100%
22	Korean/Columbus	1,200.00	100.00	1,200.00	100%
23	Moultrie/First	11,000.00	916.67	5,000.33	45%
24	Northminster	31,000.00	2,583.33	15,499.92	50%
25	Phenix City	1,000.00	83.33		0%
26	Quitman/First	3,000.00	250.00		0%
27	Sherwood	2,500.00	208.33	2,500.00	100%
28	St Andrews	6,000.00	500.00	6,000.00	100%
29	St Paul	2,000.00	166.67	2,000.00	100%
30	Thomaston/First	9,500.00	791.67	4,752.00	50%
31	Thomasville/2nd	2,250.00	187.50	1,128.00	50%
32	Tifton/First	12,000.00	1,000.00	4,000.00	33%
33	Valdosta/First	5,000.00	416.67	2,916.69	58%
34	Valdosta/Trinity	30,000.00	2,500.00	9,000.00	30%
35	W-R Westminster	6,000.00	500.00	3,000.00	50%
36	W-R/First	5,500.00	458.33	2,749.98	50%
37	Washington Ave	5,500.00	458.33		0%
38	Wayside	2,000.00	166.67		0%
	Totals	305,473.00	25,456.08	156,929.33	51%

** light-colored pledge amounts have not yet been confirmed with congregations*

Flint River Presbytery, Inc.
Operating Budget Performance
June 2025

	Jun 25	Budget	Jan - Jun 25	YTD Budget	Annual Budget
Ordinary Income/Expense					
Income					
3999999 · Operational Income					
4000000 · Operations Accounts					
4000001 · Pres Unified Pledge	21,138.94	25,456.08	156,929.33 ¹	152,736.48	305,473.00
4000002 · Prior Year Pledge	0.00	0.00	13,625.33	10,350.00	10,350.00
4000003 · Dismissal Pledges	1,462.50		8,775.00		
4000005 · Per Capita - Pres Portion	497.52	921.60	7,704.55	5,529.60	11,059.20
4000006 · Per Capita - GA	1,057.21	1,958.40	16,372.15	11,750.40	23,500.80
4000007 · Per Capita - Synod	259.11	480.00	4,012.78	2,880.00	5,760.00
4000008 · Prior Year Per Capita	0.00		1,048.42		
4000020 · Misc Income	428.00		5,463.00 ²		
4000028 · IGITDaM	1,337.00		5,696.00		
Total 4000000 · Operations Accounts	26,180.28	28,816.08	219,626.56	183,246.48	356,143.00
4000024 · Interfund Transfers					
4000050 · Interfund Tsfr-Camp. Min Endow					
1 · For GSW Salary Support	0.00	0.00	8,150.00	8,150.00	8,150.00
2 · For VSU Salary Support	0.00	0.00	8,150.00	8,150.00	8,150.00
3 · For Abbey Salary Support	0.00	0.00	8,150.00	8,150.00	8,150.00
4 · For Macon CM Salary Support	0.00		0.00		
Total 4000050 · Interfund Tsfr-Camp. Min Endow	0.00	0.00	24,450.00	24,450.00	24,450.00
4000065 · Interfund Tsfr-Walter Flint					
Grants · Grants	0.00	0.00	182,000.00	182,000.00	182,000.00
SCC · Small Church Coordinators	11,250.00	0.00	22,500.00	22,500.00	45,000.00
Total 4000065 · Interfund Tsfr-Walter Flint	11,250.00	0.00	204,500.00	204,500.00	227,000.00
4000098 · Interfund Txfr-Montreat Escrow	0.00	0.00	0.00	5,000.00	5,000.00
Total 4000024 · Interfund Transfers	11,250.00	0.00	228,950.00	233,950.00	256,450.00
Total 3999999 · Operational Income	37,430.28	28,816.08	448,576.56	417,196.48	612,593.00
Total Income	37,430.28	28,816.08	448,576.56	417,196.48	612,593.00
Gross Profit	37,430.28	28,816.08	448,576.56	417,196.48	612,593.00
Expense					
4999999 · Advisory Board Expenses					
500000a · Presbytery Meeting Exp	-25.00	375.00	3,938.87 ³	2,250.00	4,500.00

Flint River Presbytery, Inc.
Operating Budget Performance
June 2025

	Jun 25	Budget	Jan - Jun 25	YTD Budget	Annual Budget
500000b · Advisory Board Meetings	0.00	125.00	1,017.06	750.00	1,500.00
5000002 · Staff Travel/Pastoral Care- EP	1,006.77	833.33	3,646.79	4,999.98	10,000.00
5000009 · Staff and Moderator Training	0.00		583.06 ⁴		
5000029 · Stated Clerk - FICA	90.69	91.67	544.11	550.02	1,100.00
5000030 · Stated Clerk Salary	1,185.42	1,185.42	7,112.52	7,112.52	14,225.00
5000058 · Annual Corporation Expenses	0.00	0.00	380.00 ⁵	150.00	150.00
Total 4999999 · Advisory Board Expenses	2,257.88	2,610.42	17,222.41	15,812.52	31,475.00
5001999 · Administrative Expenses					
5002001 · Subscriptions & Dues	0.00	8.33	89.10	49.98	100.00
5002002 · Office Supplies/Printing	0.00	54.17	533.92	325.02	650.00
5002003 · Telephone/Internet	132.06	137.50	897.50 ⁶	825.00	1,650.00
5002004 · Postage	73.00	79.17	349.26	475.02	950.00
5002006 · Audit/Review	0.00	250.00	0.00	1,500.00	3,000.00
5002007 · Calendars/Yearbook/BOO	-1,292.00		-1,292.00		
5002008 · Copiers	0.00	72.92	0.00	437.52	875.00
5002010 · Bank Charges	50.00	52.08	300.13	312.48	625.00
5002011 · Comp/Software/Alarm/TechSupport	424.49	637.50	2,462.41	3,825.00	7,650.00
5002013 · Merchant Service Fees	-18.48	31.25	125.56	187.50	375.00
5002015 · Storage Unit	0.00	183.33	757.00	1,099.98	2,200.00
5002016 · Post Office Box	0.00	37.50	0.00	225.00	450.00
5002018 · Digital/Media Support	0.00	62.50	341.25	375.00	750.00
Total 5001999 · Administrative Expenses	-630.93	1,606.25	4,564.13	9,637.50	19,275.00
5004999 · Property Expenses					
5005045 · General Insurance	0.00	416.67	4,819.00 ⁷	2,500.02	5,000.00
5005050 · Exec Presbyter Auto Rep/Maint	-234.25	291.67	-177.11	1,750.02	3,500.00
Total 5004999 · Property Expenses	-234.25	708.34	4,641.89	4,250.04	8,500.00
5007998 · COM Expenses					
5008000 · COM Meetings	0.00	83.33	227.91 ⁸	499.98	1,000.00
5008005 · COM Commission Work	0.00		500.00		
5008020 · Trained Ruling Elder Prgm	274.72		13.33		
Total 5007998 · COM Expenses	274.72	83.33	741.24	499.98	1,000.00
5007999 · CPM Expenses					
5008001 · CPM Meetings	0.00	10.42	0.00	62.52	125.00
5008035 · Inquirer/Candidate Expenses	0.00		0.00		

Flint River Presbytery, Inc.
Operating Budget Performance
June 2025

	<u>Jun 25</u>	<u>Budget</u>	<u>Jan - Jun 25</u>	<u>YTD Budget</u>	<u>Annual Budget</u>
Total 5007999 · CPM Expenses	0.00	10.42	0.00	62.52	125.00
5009999 · Education/Nuture Expenses					
5010000 · Commission meetings & publicity	0.00	10.42	0.00	62.52	125.00
5010118 · Montreat Income	-1,250.00		-2,100.00		
5010119 · Montreat Expense	9,386.28	416.67	10,046.28	2,500.02	5,000.00
5010200 · Leadership Education&Developmt					
5010200 · Leadership Education&Developmt - Other	0.00	41.67	0.00	250.02	500.00
Total 5010200 · Leadership Education&Developmt	<u>0.00</u>	<u>41.67</u>	<u>0.00</u>	<u>250.02</u>	<u>500.00</u>
Total 5009999 · Education/Nuture Expenses	8,136.28	468.76	7,946.28	2,812.56	5,625.00
5014999 · Mission/Evangelism Expenses					
5015000 · Mission/Evangelism Meeting Exp	0.00	8.33	299.20	49.98	100.00
5015099 · Grants for mission enhancement					
5015150 · Barnesville	0.00		10,000.00		
5015101 · Edgewood	0.00		1,000.00		
5015104 · Cuba	0.00		12,000.00		
5015105 · Forsyth	0.00		20,000.00		
5015106 · Tifton First	0.00		5,000.00		
5015110 · Valdosta 1st	0.00		20,000.00		
5015112 · WarnerRobins 1st	0.00		7,500.00		
5015116 · Dillon Rd	0.00		2,500.00		
5015124 · Westminster	0.00		24,000.00		
5015127 · Thomaston	0.00		15,000.00		
5015128 · Washington Avenue	0.00		10,000.00		
5015131 · Beth Salem	0.00		12,500.00		
5015132 · Fort Gaines	0.00		7,500.00		
5015133 · Saint Andrews	0.00		20,000.00		
5015134 · Carver Heights	0.00		10,000.00		
5015137 · New Hope Presbyterian Church	0.00		3,000.00		
5015139 · Camilla First	0.00		2,000.00		
5015099 · Grants for mission enhancement - Other	0.00	0.00	0.00	182,000.00	182,000.00
Total 5015099 · Grants for mission enhancement	<u>0.00</u>	<u>0.00</u>	<u>182,000.00</u>	<u>182,000.00</u>	<u>182,000.00</u>
5015205 · GSW - Salary/Benefits/Program	1,614.75	2,595.83	11,416.28	15,574.98	31,150.00
5015300 · VSU - Salary/Benefits/Program	3,511.20	2,595.83	18,321.08	15,574.98	31,150.00
5015405 · Abbey -Salary/Benefits/Program	0.00	2,595.83	10,765.00	15,574.98	31,150.00
Total 5014999 · Mission/Evangelism Expenses	<u>5,125.95</u>	<u>7,795.82</u>	<u>222,801.56</u>	<u>228,774.92</u>	<u>275,550.00</u>

Flint River Presbytery, Inc.
Operating Budget Performance
June 2025

	Jun 25	Budget	Jan - Jun 25	YTD Budget	Annual Budget
5019999 · Presbytery Benevolences					
5020050 · Synod - Per Capita	155.47	288.00	2,407.67	1,728.00	3,456.00
5020005 · Synod - Mission Giving	103.64	192.00	1,605.11	1,152.00	2,304.00
5020045 · General Assembly Per Capita	1,057.22	1,958.40	16,372.16	11,750.40	23,500.80
5020061 · National/International Mission	0.00	166.67	0.00	1,000.02	2,000.00
Total 5019999 · Presbytery Benevolences	1,316.33	2,605.07	20,384.94	15,630.42	31,260.80
5020699 · Finance Committee Expenses					
5020700 · Finance Committee Meetings	0.00	22.92	50.92 ¹⁰	137.52	275.00
Total 5020699 · Finance Committee Expenses	0.00	22.92	50.92	137.52	275.00
5020800 · Personnel					
5020801 · Meetings	0.00	41.67	0.00	250.02	500.00
Total 5020800 · Personnel	0.00	41.67	0.00	250.02	500.00
5024999 · Staff Expenses					
5025000 · Executive Presbyter Salary	4,856.66	4,856.67	29,139.96	29,140.02	58,280.00
5025005 · Exec Presby Social Security	626.54	626.50	3,759.24	3,759.00	7,518.00
5025010 · Exec Presby Housing Allowance	3,333.34	3,333.33	20,000.04	19,999.98	40,000.00
5025020 · Exec Presby Professional Exp	2,462.41	416.67	3,608.48	2,500.02	5,000.00
5025030 · EP Sabbatical Fund	0.00	41.67	0.00	250.02	500.00
5025040 · EP BOP dues - pension/medical	2,124.02	2,165.25	12,744.12	12,991.50	25,983.00
5025215 · Bookkeeper	2,083.33	2,083.33	14,583.31	12,499.98	25,000.00
5025300 · Office Manager Salary	2,157.08	2,157.08	12,942.48	12,942.48	25,885.00
5025420 · Office Manager BOP dues-pen/med	2,933.76	2,933.75	17,602.56	17,602.50	35,205.00
5025421 · Office Manager - FICA	165.02	165.00	990.10	990.00	1,980.00
5025426 · Small Church Coordinator Xps					
5025422 · Small Church Coordinator - LP	775.08		4,693.54		
5025423 · Small Church Coordinator - BD	861.20		5,300.20		
5025424 · SCC Professional Xps #1 (LP)	0.00		533.63		
5025425 · SCC Professional Xps #2 (BD)	53.50		1,080.47		
5025426 · Small Church Coordinator Xps - Other	0.00	3,750.00	0.00	22,500.00	45,000.00
Total 5025426 · Small Church Coordinator Xps	1,689.78	3,750.00	11,607.84	22,500.00	45,000.00
5025500 · Lay Employee FICA	0.00		0.00		
Total 5024999 · Staff Expenses	22,431.94	22,529.25	126,978.13	135,175.50	270,351.00
Total Expense	38,677.92	38,482.25	405,331.50	413,043.50	643,936.80

Flint River Presbytery, Inc.
Operating Budget Performance
June 2025

	<u>Jun 25</u>	<u>Budget</u>	<u>Jan - Jun 25</u>	<u>YTD Budget</u>	<u>Annual Budget</u>
Net Ordinary Income	-1,247.64	-9,666.17	43,245.06	4,152.98	-31,343.80
Other Income/Expense					
Other Income					
4001020 · Misc Income - nonbudgeted					
4001020 · Misc Income - nonbudgeted - Other	0.00		0.00		
Total 4001020 · Misc Income - nonbudgeted	0.00		0.00		
4001009 · Other Income					
4001010 · Presbytery Offering-Income	0.00		1,085.00		
4001011 · Presbytery Offering-Disbursed	0.00		-1,085.00		
4001015 · In/Out Income					
#17 in · StopHungerNowRiseAgainstHunger	0.00		1,075.00		
#22 in · Int/Div Income - Wilgus Fund	0.00		1,287.49		
#30 in · The Montreat Fund	0.00		2,075.00		
#36 in · Disaster Relief - others					
#36 in · Disaster Relief - others - Other	918.65		4,859.55		
Total #36 in · Disaster Relief - others	918.65		4,859.55		
#38 in · Others	0.00		13,040.99		
#40 in · Campus Ministry CapitalCampaign					
a · Donations	880.00		3,605.00		
Total #40 in · Campus Ministry CapitalCampaign	880.00		3,605.00		
#44 in · Harry Halpert Fund	0.00		6,800.00		
#46 in · Tech Grants	0.00		16,378.00		
#48 in · Missionary support - Haugens	2,500.00		7,500.00		
#54 in · The Table at UKirk at Mercer	150.00		150.00		
#55 in · Creativity Fund	500.00		1,000.00		
#72 in · Int/Div Income - Ramey Fund	0.00		739.34		
Total 4001015 · In/Out Income	4,948.65		58,510.37		
4001016 · In/Out Income Disbursed					
#17 out · StopHungerNowRiseAgainstHunger	0.00		-1,075.00		
#22 out · Int/Div-Wilgus to Habitat House	0.00		-1,287.49		
#30 out · The Montreat Fund	0.00		-2,075.00		
#36 out · Disaster Relief - others					
#36 out · Disaster Relief - others - Other	-918.65		-4,859.55		

Flint River Presbytery, Inc.
Operating Budget Performance
 June 2025

	<u>Jun 25</u>	<u>Budget</u>	<u>Jan - Jun 25</u>	<u>YTD Budget</u>	<u>Annual Budget</u>
Total #36 out · Disaster Relief - others	-918.65		-4,859.55		
#38 out · Others	0.00		-13,040.99		
#40 out · Campus Ministry Capital Campaign b - out · Txfrs to Money Mkt (CMCC)	-880.00		-3,605.00		
Total #40 out · Campus Ministry Capital Campaign	-880.00		-3,605.00		
#44 out · Harry Halpert Fund	0.00		-6,800.00		
#46 out · Tech Grants	0.00		-16,378.00		
#48 out · Missionary Support - Haugens	-2,500.00		-7,500.00		
#54 out · The Table at Ukirk at Mercer	-150.00		-150.00		
#55 out · Creativity Fund	-500.00		-1,000.00		
#72 out · Int/Div-Ramey to HH Guatemala	0.00		-739.34		
Total 4001016 · In/Out Income Disbursed	-4,948.65		-58,510.37		
Total 4001009 · Other Income	0.00		0.00		
Total Other Income	0.00		0.00		
Net Other Income	0.00		0.00		
Net Income	<u>-1,247.64</u>	<u>-9,666.17</u>	<u>43,245.06</u>	<u>4,152.98</u>	<u>-31,343.80</u>

Flint River Presbytery, Inc.
Operating Budget Performance
June 2025

1. Decreased by \$18,500 (\$7,500 pledge from New Hope + decrease in Americus First pledge of \$6,000)

2. Donations to general fund from various individuals; also includes New Hope pledge of \$1,875

3. Includes honorarium (\$750), Travel (\$226.08), and Meals (\$208.04) for speaker, Daycare (\$100) for the meeting, Dinner before meeting (\$578.15), Rooms for 5 people (\$816.60), Registration for 2026 Georgia Presbyteries Gathering (\$1,260)

4. Vickie Dieth's travel expenses for Moderator Training

5. Corporate registration renewal for The Pres House at GSW, The Abbey, The Center at VSU, and Flint River Presbytery; paid for three years in advance for a net savings of \$220 over three years

6. Higher in April due to international plan to allow Deb to interface with FRP while in the Dominican Republic

7. 1) Includes \$815 annual payment for workers' comp, \$1,516 annual payment for auto insurance, and \$2,488 – 2 of 4 quarterly payments for property insurance

8. COM Retreat Breakfast 3/15 (\$53.57) & Lodging for COM Meeting in Albany 4/5-4/6 (\$174.34)

9. The Center at VSU (as in prior years) repays the presbytery for the amount that is over \$31,150 so that each campus ministry receives the same amount. All campus ministries that do not use their full amount by the end of the year receive year-end checks from the presbytery to be used for their local ministry

10. Mileage Reimbursement

Flint River Presbytery, Inc

Statement of Financial Position

As of June 30, 2025

	6/30/25	12/31/24	\$ Change
ASSETS			
Current Assets			
Checking/Savings			
1000101 · Cash - Operations (Security)	\$61,647.77	\$25,000.00	\$36,647.77
Total Checking/Savings	\$61,647.77	\$25,000.00	\$36,647.77
Other Current Assets			
1100000 · Current Receivables	\$441.64	\$328.93	\$112.71
1200000 · Undeposited Funds - Vanco	\$2,624.82	\$335.60	\$2,289.22
Fixed Assets *			
1050101 - Land - GSW Student Center	\$11,813.00	\$11,813.00	\$0.00
1050102 - Land - VSU Student Center	\$20,000.00	\$20,000.00	\$0.00
1050202 - Building - GSW Student Center	\$82,056.00	\$82,056.00	\$0.00
1050203 - Building - VSU Student Center	\$44,900.00	\$44,900.00	\$0.00
1050301 - Furn & Fixtures - VSU Student Center	\$8,684.00	\$8,684.00	\$0.00
1050302 - Furn & Fixtures - GSW Student Center	\$12,982.51	\$12,982.51	\$0.00
1050400 - Vehicles	\$39,504.86	\$39,504.86	\$0.00
Total Fixed Assets	\$219,940.37	\$219,940.37	\$0.00
Other Assets			
1020126 · Jerry Lee Watts Campus Ministry Fund			
1020128 · Permanently Restricted	\$275,000.00	\$275,000.00	\$0.00
1020127 · Unrestricted	\$757,486.30	\$680,647.56	\$76,838.74
1020130 · Contingency Fund	\$83,153.83	\$62,673.82	\$20,480.01
1020140 · Robert H. Ramey Fund			
1020141 · Temporarily Restricted	\$41,679.61	\$40,862.69	\$816.92
1020142 · Wilgus Endowment Fund			
1020143 · Permanently Restricted	\$48,627.00	\$48,627.00	\$0.00
1020144 · Temporarily Restricted	\$23,964.15	\$22,467.41	\$1,496.74
1020145 · Walter Flint Fund			
1020146 · Permanently Restricted	\$4,190,209.72	\$4,190,209.72	\$0.00
1020145 · Unrestricted	\$2,197,531.02	\$1,933,806.05	\$263,724.97
1020165 · Inquirer/Candidate Fund	\$7,528.50	\$16,988.50	-\$9,460.00
1020170 · J.J. Felton Fund			
1020171 · Temporarily Restricted	\$14,650.03	\$14,299.99	\$350.04
1020201 · Hunger Fund	\$12,301.18	\$11,189.93	\$1,111.25
1020300 · Money Market Fund *			
1020301 · Macon Campus Ministry	\$104,243.66	\$103,640.84	\$602.82
1020302 · CTS/FRP	\$35,731.03	\$35,525.28	\$205.75
1020303 · Habitat House	\$6,837.75	\$3,845.76	\$2,991.99
1020304 · Peacemaking Income	\$0.00	\$302.70	-\$302.70
1020305 · GA Meeting	\$3,709.02	\$3,687.58	\$21.44
1020306 · Technology Fund	\$25,293.00	\$41,139.49	-\$15,846.49
1020307 · CEN escrow/Triennium	\$0.00	\$3,177.54	-\$3,177.54
1020309 · Karen B. Jones Montreat Fund	\$12,839.22	\$7,496.63	\$5,342.59
1020310 · Disaster Relief			
1020312 - Donations	\$19,177.64	\$20,187.29	-\$1,009.65
1020314 · Harry Halpert Fund	\$67,550.38	\$34,235.52	\$33,314.86
1020315 · Creativity Fund	\$28,483.18	\$58,190.89	-\$29,707.71
1020318 · Property Maintenance Fund	\$61,562.66	\$61,206.64	\$356.02
1020319 · Young Adults Ministry Interns	\$15,059.47	\$24,601.67	-\$9,542.20

Flint River Presbytery, Inc

Statement of Financial Position

As of June 30, 2025

	6/30/25	12/31/24	\$ Change
1020322 · Staffing for Small Churches	\$28,566.37	\$28,402.27	\$164.10
1020329 · Ed Booth Continuing Education Fund	\$15,460.71	\$15,390.40	\$70.31
1020331 · Long Term Legacy Fund	\$152,790.04	\$152,060.21	\$729.83
1020332 · OBP Escrow	\$15,411.32	\$15,322.21	\$89.11
1020333 · Habitat - Guatemala	\$0.00	\$941.86	-\$941.86
Total 1020300 · Money Market Fund	\$592,715.45	\$609,354.78	-\$16,639.33
Total Other Assets	\$8,244,846.79	\$7,906,127.45	\$339,572.09
TOTAL ASSETS	\$8,529,501.39	\$8,151,732.35	\$378,621.79
LIABILITIES & EQUITY			
Current Liabilities			
2400000 · Payroll Liabilities	\$1,290.13	\$1,978.92	-\$688.79
Total Current Liabilities	\$1,290.13	\$1,978.92	-\$688.79
Total Liabilities	\$1,290.13	\$1,978.92	-\$688.79
Equity			
31300 · Unrestricted Net Assets	\$3,545,686.59	\$2,960,143.68	\$585,542.91
31500 · Temporarily Restricted Net Assets	\$80,293.79	\$77,630.09	\$2,663.70
32000 · Permanently Restricted Net Assets	\$4,513,836.72	\$4,513,836.72	\$0.00
Net Income	\$388,394.16	\$598,142.94	-\$209,748.78
Total Equity	\$8,528,211.26	\$8,149,753.43	\$378,457.83
TOTAL LIABILITIES & EQUITY	\$8,529,501.39	\$8,151,732.35	\$377,769.04

* (\$87,000 of EJ-MM LT held in 4% yield CD - maturity date 4/6/26)

(The figures for "Fixed Assets" reflect the actual purchase price of the noted assets and do not, in any way, reflect entries for depreciation and appreciation. They are listed "at cost".)

FLINT RIVER PRESBYTERY SPECIAL FUNDS OVERVIEW

6/30/2025

ADVISORY BOARD (AB) OVERSIGHT

Creativity Fund *(Edward Jones - Long Term Money Market Fund)*

Current balance: \$ 28,483.18

Purpose: To provide funding for small projects designed to help congregations develop an experimental and missional mindsets. Projects must include outreach beyond the established congregation and foster new relationships within the community.

Responsibility: Advisory Board (AB)

General Assembly (GA) Meeting *(Edward Jones - Long Term Money Market Fund)*

Current balance: \$ 3,709.02

Purpose: To provide adequate funding for this event in a way that does not create budget strain

Responsibility: Advisory Board (AB)

COMMITTEE ON EDUCATION AND NURTURE (CEN) OVERSIGHT

Austin College Scholars Fund *(Held outside of Flint River)*

Current balance: \$ 43,000.00 (full tuition for one year)

Purpose: Austin College provides full tuition for any student on the membership roll of a PC(USA) church. Additionally, room and board are also covered for students of PC(USA) clergy and staff.

Responsibility: Committee on Education and Nurture (CEN)

Ed Booth Continuing Education Fund *(Edward Jones - Long Term Money Market Fund)*

Current balance: \$ 15,460.71

Purpose: To ensure that uncovered costs of presbytery-wide trips does not create budget strain

Responsibility: Staff in consultation with CEN, when appropriate

Karen B. Jones Montreat Fund *(Edward Jones - Long Term Money Market Fund)*

Current balance: \$ 12,839.22

Purpose: To provide adequate funding for this event

Responsibility: Committee on Education and Nurture (CEN)

Presbyterian College Scholars Fund *(Held outside of Flint River)*

Current balance: \$ 37,781.17

Purpose: Approximately \$2,000/year is available to students from Flint River who attend Presbyterian College

Responsibility: Committee on Education and Nurture (CEN)

Young Adults Ministry Interns (YAMI) Scholarships *(Edward Jones - Long Term Money Market Fund)*

Current balance: \$ 15,059.47

Purpose: To provide funding for Young Adults Ministry Interns

Responsibility: Committee on Education and Nurture (CEN) in partnership with Advisory Board

COMMITTEE ON MISSION AND EVANGELISM (CME) OVERSIGHT

Habitat House Fund (Edward Jones - Long Term Money Market Fund)

Current balance: \$ 6,837.75
Purpose: To fund a presbytery Habitat House build (from quarterly distributions from Wilgus and Ramey Funds)
Responsibility: Committee on Mission and Evangelism (CME)

Hunger Fund (Edward Jones - Short Term Money Market Fund)

Current balance: \$ 12,301.18
Purpose: To fund Hunger Projects
Responsibility: Committee on Mission and Evangelism (CME)

Jerry Lee Watts Campus Ministry Fund (Edward Jones - Jerry Lee Watts Campus Endowment Fund)

Current balance: \$ 1,032,486.30
Purpose: To support campus ministry
Limitations: The corpus balance (\$275,000) cannot be spent
Funds can be withdrawn from Edward Jones as needed
Responsibility: Committee on Mission and Evangelism (CME)

Macon Campus Ministry Fund (Edward Jones - Long Term Money Market Fund)

Current balance: \$ 104,243.66
Purpose: To fund Macon Campus Ministry
Responsibility: Committee on Mission and Evangelism (CME)

Robert H. Ramey Fund (Presbyterian Foundation - Robert H. Ramey Fund)

Current balance: \$ 41,679.61
Purpose: To provide funding for Habitat for Humanity International and its work in Guatemala
Limitations: The corpus (\$13,317.59) cannot be spent; quarterly interest is transferred to the Edward Jones Money Market Fund - Habitat House Fund; account held with the Presbyterian Foundation
Responsibility: Committee on Mission and Evangelism (CME)

Technology Fund (Edward Jones - Long Term Money Market Fund)

Current balance: \$ 25,293.00
Purpose: To be used for the future of this presbytery and its work
Responsibility: Committee on Mission and Evangelism (CME)

Wilgus Fund (Presbyterian Foundation - Wilgus Endowment Fund)

Current balance: \$ 72,591.15
Purpose: To provide funding for a Habitat House
Limitations: The corpus (\$48,627) cannot be spent; quarterly interest is transferred to the Edward Jones Money Market Fund - Habitat House Fund; account held with the Presbyterian Foundation
Responsibility: Committee on Mission and Evangelism (CME)

COMMITTEE ON MINISTRY (COM) OVERSIGHT

Contingency Fund *(Vanguard - Contingency Fund)*

Current balance: \$ 83,153.83
Purpose: An escrow account for designated funds.
Limitations: N/A - funds can be withdrawn from the Vanguard Account every 30 days;
last withdrawal was 12/20/23
Responsibility: FRP Treasurer, reporting to the presbytery, after having received direction from staff and/ or the
Committee on Ministry (COM)

Escrow Accounts:

- a. \$ 185.03 EP Sabbatical
- b. \$ 10,563.95 COM Debt Reduction
- c. \$ 10,263.53 COM Minister Aid
- d. \$ 12,121.86 Auto (EP)
- e. \$ 28,555.00 PJC/Legal
- j. \$ 13,349.74 TRE Program (COM)
- k. \$ 2,549.26 Pastor Retreat (COM)
- l. \$ 4,565.11 Confirmation Retreat (CEN)
- m. \$ 1,000.35 EP - Pastoral Care

CTS/FRP Initiative *(Edward Jones - Long Term Money Market Fund)*

Current balance: \$ 35,731.03
Purpose: To fund salary & seminary debt support for first call/small church
pastor who is a graduate of Columbia Theological Seminary
Limitations: Up to \$20,000/year for 3 years for salary; up to \$10,000 for debt
Responsibility: Committee on Ministry (COM)

COMMITTEE ON PREPARATION FOR MINISTRY (CPM) OVERSIGHT

Inquirer/Candidate Support Fund *(Vanguard - Inquirer/Candidate Fund)*

Current balance: \$ 7,528.50
Purpose: To provide support for current inquirers and candidates within our presbytery
Limitations: N/A - funds can be withdrawn from the Vanguard account every 30 days;
last withdrawal was 3/31/20
Responsibility: The Committee on Preparation for Ministry (CPM)

FINANCE COMMITTEE (FIN) OVERSIGHT

Disaster Relief *(Edward Jones - Long Term Money Market Fund)*

Current balance: \$ 19,177.64
Purpose: To assist congregations during natural disasters, particularly assistance around insurance deductibles up to \$1,500
Responsibility: Flint River Presbytery

Long Term Legacy Fund *(Edward Jones - Long Term Money Market Fund)*

Current balance: \$ 152,790.04
Purpose: To support the cost of presbytery personnel - as needed - in order to ensure long-term health and stability for this presbytery
Responsibility: Finance committee

Harry Halpert Fund *(Edward Jones - Long Term Money Market Fund)*

Current balance: \$ 67,550.38
Purpose: To help small churches with special needs, particularly emergency repairs
Responsibility: Finance Committee

Joshua Felton Fund *(Wells Fargo - J.J. Felton Fund)*

Current balance: \$ 14,650.03 (matures on November 15, 2025 and November 15, 2026)
Purpose: To establish post high school educational funds established for the son of the late Rev. David Felton
Limitations: Funds are U.S. Treasury Zero Coupon Bonds and will be transmitted to the children at maturity
Responsibility: Finance Committee

OBP Escrow *(Edward Jones - Long Term Money Market Fund)*

Current balance: \$ 15,411.32
Purpose: In case of budget shortfall
Responsibility: Flint River Presbytery

Property Maintenance Fund *(Edward Jones - Long Term Money Market Fund)*

Current balance: \$ 61,562.66
Purpose: To provide funds for repair and renovation of presbytery buildings and owned equipment
Responsibility: Finance Committee

Staffing for Small Churches *(Edward Jones - Long Term Money Market Fund)*

Current balance: \$ 28,566.37
Purpose: To provide funding for one or more small church coordinators who will provide additional support to congregations under 100 members without full-time, consistent leadership; these funds will also be used to offset other full-time and/or part-time staff - as needed - since 82% of the presbytery is small churches and this is where the bulk of staffing's attention rests (funded by Walter Flint Fund)
Responsibility: Finance Committee and Personnel Committee

Walter Flint Fund *(Edward Jones - Walter Flint Fund)*

Current balance: \$ 6,387,740.74
Purpose: To support small churches in the presbytery, under rules laid down by the donor
Limitations: The corpus balance (available from the Finance Committee moderator by request) cannot be spent and is subject to change yearly
Responsibility: Finance Committee

MINUTES OF THE MEETING OF NHAC

ZOOM 6 pm

May 22, 2025

Present: Liz Allison, Raymond Haggard, Connie Happell, Oweta Hegeman, Faye Isele (co-moderator), Kris Jain (co-moderator), Jimmy Moye, Lucie Perkins, and Andre Wilson.

Absent: Chris Posey (due to his father's illness)

Staff: Deb Tregaskis and Becky Willis

Guests: Pete Rose, New Hope treasurer, and Justin Tucker, New Hope Clerk of Session

The meeting was called to order by moderator Isele.

Connie Happell graciously opened with prayer.

We welcomed Connie Happell and Jimmy Moye to the AC to help with the issues and activities around the dissolution of New Hope. Connie will be interfacing pastorally with congregation members and Jimmy brings us much needed legal guidance. Pete Rose and Justin Tucker have been asked to join us at 7.

The minutes of the April 24, 2025 meeting of the AC were approved as printed.

We refreshed our minds around events and correspondences at New Hope since much has occurred since our last meeting:

- A congregational meeting was held by New Hope on April 27th. The congregation will be dissolved as of May 31, 2025. This was confirmed in correspondence from Justin to the AC on April 30, 2025.
- The action of presbytery, concurring with the congregation's request and the recommendation of our AC on May 3.
- the action of COM in response to the congregation's request to lengthen Colleen's dissolution package. (This was denied.)
- It is noted that all correspondence between New Hope, the AC, and FRP leadership is available to commission members via existing emails.
- All commission members and FRP leadership are commended for the faithfulness of their labors, for their graciousness and faithfulness in discerning a way through this time

We were informed that the Columbus- area churches will meet for discussion of possibilities for the New Hope properties on July 13, 2025 after worship. This meeting will include lunch provided by the Korean congregation. A translator will be available.

We then turned to decisions that needed to be made and things that needed to be done.

1. It was moved, supported and carried **“to make lump sum employment payments to Colleen and to Brenda.”** This will simplify the transition and bookkeeping. Toni Hatfield, the FRP Accountant will be handling bill payment, etc. after the financial records have been turned over to FRP, along with remaining assets. Later, it was moved, supported and carried **“to extend Brenda’s employment through June. Toni will process this payment.**
2. Much discussion happened around what to do about the deed to the property and dissolving of New Hope as a Registered corporation in the state of Georgia. Jimmy and Fay will sort this out and bring us back a suggested solution. It is noted that Jimmy is to be paid for legal services provided.
3. More discussion followed regarding follow up with members of NH. They will need encouragement and perhaps advice as they seek new churches. Connie will meet with the “Morningside Ladies” and will also offer information assistance to other New Hope members. She will also do a mapping of those currently part of New Hope to facilitate this process.
4. It was moved, supported and carried that **“Colleen be given until June 15th to remove her property from the New Hope building.”** Help is available to her from the AC members. It was moved, supported and carried that **the church will be rekeyed by the handyman from First (Columbus) after June 30, 2025.”** Danny Dieth will coordinate this and it will be paid for out of New Hope funds. Then, it was moved, supported and carried that **“Liz and Connie will be keepers of the keys and that a lock box with code be used on the main door of the church.”** Elizabeth at the FRP office will have the code. There is not a security alarm at this time.

5. Pete and Justin's to do list:

- Notify the PO to forward mail to Presbytery
- Notify power co, water co, lawn service and other vendors of change of address
- Pay May bills and close bank account with check to Presbytery for balance once checks have processed
- Inform those who monitor the fire alarm of the change of address/contact information.
- Faye will provide a list to Justin and Pete of "necessary information" that needs to be communicated/ relocated to FRP.
- Provide the presbytery with all pertinent correspondence, minutes, financial records, employment records and files and member rolls. (We can help with this if needed.)

We then turned to the questions around the following issues.

1. Return of unused money from tech grant and Walter Flint grant to these funds.
2. They didn't pay all of last year's pledge and none of this years pledge.
3. To decrease the impact on FRP consider a 5 year payment of pledge in a declining amount (100%, 80%, 60%, 40%, 20%) as is done with churches leaving the denomination.

It was moved, supported and carried **to recommend to FRP that unused Tech Grant and Walter Flint grant funds paid to New Hope are to be returned to the appropriate grant funds. In addition, the balance due of last year's New Hope pledge and all of the unpaid 2025 pledge are to be paid to FRP and that the presbytery receive payments based on their 2025 pledge over the next 5 years (beginning with fiscal year 2026) in declining amount of 100%, 80%, 60%, 40% and 20%. These amounts will be taken from the assets of New Hope."**

Other items

Justin requested usage of the building through the summer months for Game Night. It was moved, supported and carried **to not honor the request.** Justin will be encouraged to seek other spaces to host this ministry.

Pete raised the issue of designated funds. The Gazebo fund (\$3000) was initially to be used to provide and install a gazebo in memory of a child who had died. We encouraged Pete to contact the mother of the boy to seek her input on how the money might be used to duly honor her precious child.

The AC thanked Pete and Justin for their hard work on this transition, knowing that it is done in the midst of their very real grief.

Our next meeting will be Monday, July 14 at 6 pm, immediately after the meeting of the Columbus area churches.

It was moved, supported and carried **to adjourn the meeting.**

Kris closed the meeting with prayer.

Respectfully submitted,

Lucie Perkins

MINUTES OF THE MEETING OF NHAC

ZOOM 6:00 PM

JULY 14, 2025

Present: Liz Allison, Raymond Haggard, Connie Happell, Oweta Hegeman, Faye Isele (co-moderator), Jimmy Moye, and Chris Posey

Absent: Kris Jain, Lucie Perkins, and Andre Wilson

Staff Present: Deb Tregaskis and Becky Willis

Opening Prayer - Faye

Church Member Support & Outreach

We discussed outreach efforts to New Hope members following the church split/closure, focusing on three groups: members loyal to Colleen, All Saints members, and Morningside attendees. Connie is coordinating these efforts and planning a lunch gathering for Morningside widows with support from Linda and Brenda. Deb will ask Frazer to reach out to several former members as well.

Trust Fund and Financial Updates

Deb and Toni continue to manage the transfer of the trust fund. Deb will meet with the Finance Committee to explore investment and growth options. Pete will finalize the closure of New Hope's account and send a cashier's check to Toni.

Property and Technology Transitions

Jimmy will coordinate the property deed transfer to Flint River Presbytery. Pete will back up New Hope's data from his personal computer before wiping it. Deb will confirm insurance coverage with Toni.

Records and Facility Management

Deb is holding financial records from 2006–2007 pending Toni's confirmation. Chris is managing the building and has resolved issues with doors, thermostats, and cameras. Re-keying has been quoted at \$600. Lawn care services have paused due to delayed payment—Chris will work with Toni to resolve this.

Building Use and Resource Allocation

We discussed future building use and whether future tenants should pay rent or assume full operational responsibility. Requests for furnishings and supplies are deferred at this time pending future building use. Ralph Hawkins transferred A/V equipment to Valdosta.

Membership and Bylaw Discussion

Concerns were raised regarding Michelle's requests. Since she is no longer a Presbyterian member, any future requests should go through the Abby Board regarding future asset requests from the New Hope property.

Security and Safety

Chris continues to monitor security. Fay shared a recent safety concern. The A/C will be running for the August 6th lunch meeting hosted by Deb to discuss building usage options.

Next Meeting

Our next Administrative Council meeting is scheduled for **Wednesday, August 14th, from 6:00–7:00 PM.**

Liz closed the meeting in prayer.

Action Items

Responsible Task

Jimmy	Coordinate with Pete Rose and Justin Tucker for deed signing and transfer to Flint River Presbytery
Chris	Re-key building locks; monitor building maintenance and utilities; coordinate lawn payment with Toni; ensure A/C is running for Aug. 6
Toni	Close out accounts; process final financial records; discuss insurance and utilities with Deb
Pete	Remove and store church data from his computer
Connie	Plan Morningside widows' lunch with Linda and Brenda
Deb	Confirm insurance/lawn care with Toni/Chris; contact Matt Cowell re: furniture; lead August 6 meeting; ask Frazer to call former members
Fay	Notify Rita and Michelle no decisions on property disposal/donation will be made until future building use is determined