



SPARKS from the Flint

January 2017 Edition

God's Glory Runs Deep!

by Debra T. Bibler, Executive Presbyter

We human beings are a funny lot. God has poured holy possibilities into every inch of our being, and yet we spend so much time worrying that we are "not enough." Generally speaking, I don't think many of us truly run the risk of being too soft on ourselves. *We run the risk of being far too hard.* When we tuck that hardness away into our hearts, it ends up spreading and turning our hearts into fossils of judgment and fear.

The only hopeful remedy for our fears and judgments is this: to **intentionally create daily space for Jesus to move around in our hearts, shedding Light and Warmth on those places so desperately in need of resilience and redemption.** As we start a new year, I thought I'd share a few podcasts and an app that help me daily, reminding me that God's glory "is woven into the very fabric of our souls".



Enjoy this wonderful prayer of encouragement from J. Philip Newell's [Celtic Benediction \(Morning and Night Prayer\)](#)

*In the morning light, O God,
may I glimpse again your image deep within me;
the threads of eternal glory
woven into the fabric of every man and woman.
Again may I catch sight of the mystery of the human soul
fashioned in your likeness
deeper than knowing
more enduring than time.
And in glimpsing these threads of light
amidst the weakness and distortions of my life*

Quick Links

[Flint River Presbytery](#)

[FRP Resource Center](#)

[Presbyterian's Today](#)

[PCUSA Giving Catalogue](#)

In This Issue

[Presbytery Grant Applications](#)

[CRE Training](#)

[Scotland Trip](#)

[Denominational Resources](#)

[6 Mission Agencies](#)

[7 Easy Ways to Get Your Congregation Connected](#)

[2017 Lenten Devotional](#)

[Concerns and Celebrations](#)

[Spark-ling Exchange](#)

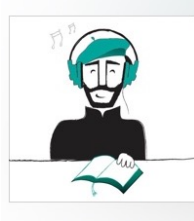
[AmazonSmile](#)

[January/February 2017 Calendar](#)

[Pastoral Care Continuing Education](#)

*let me be recalled to the strength and beauty deep in my soul.
Let me be recalled
to the strength and beauty of your image in every living soul.
AMEN*

The **Pray-as-you-Go podcast** includes a 10-12 minute daily meditation featuring beautiful, international music as well as a contemplative reading of Scripture.



The **Trinity Mission Podcast** offers morning, noon, and evening prayer and is a longer and more formal immersion in Scripture and prayer. The morning prayer service generally lasts about 20-30 minutes.



And finally, this "**Centering Prayer**" **application** can be downloaded free of charge, thanks to the generous work of the Contemplative Outreach. A feast of sound, color and Scripture makes this a rich space to revel in God's goodness.



May we trust that God's glory does indeed run deep within us and around us as we seek to serve those most in need of our loving and generous care.

Blessings,
Deb

P.S. Keep reading to be sure you don't miss any important deadlines or great resources for elder training!

Presbytery Grant Applications due **Sunday, January 15th**

Attached are the application forms for mission grants from the presbytery's Committee on Mission and Evangelism (CME) for 2017. The CME grant funding application is the one we offer every year. The hunger grant application is one we offer every few years when the amount in our hunger fund reaches a sufficient amount to make such grants available.

You may apply for both grants if you choose. Churches of any size may be considered for these grants.

Should you have any questions, please contact Pam Move at nambmove@charter.net. She will

be happy to take a look at your application in advance of the deadline and tell you if it needs any additional information or clarification.

[CME Hunger Grant Application 2017](#)

[CME Grant Funding Application](#)

Trained Ruling Elder (TRE) Class Application Deadline is **Tuesday, January 17th**
-- Using our Gifts to the Glory of God --

Our presbytery plans to offer a new "**TRE class**" in 2017 so that ruling elders may be intentionally trained to serve their congregations in particular ways and, perhaps, even be commissioned to congregations in need of leadership and care. *Please note that this is not comparable to "general ruling elder training" offered in local congregations, but rather a very specific and intentional curriculum designed to prepare ruling elders to serve as lay pastors in local congregations when the need arises.*

Please encourage one another to consider this pivotal training for the good of all.

****We are in particular need of TREs for our southern cluster****

If you are interested in entering this class,
please e-mail the attached (and completed) application to June Denney
by **Tuesday, January 17, 2017.**

Classes are generally held once a month over a period of 12-18 months,
and cost for the entire training is \$300.

Can't quite make the deadline, but still interested?

Please let us know and we'll plan accordingly.

If you have additional questions about this process, feel free to contact the following:

Volunteer Staff Associate Nancy Reimer at nreimer@bellsouth.net

COM Moderator Becky Willis at bwillis123a@yahoo.com

[TRE Application](#)

Scotland Trip Deposit due *January 31* to confirm participation!

The 2017 Scotland and Presbyterian Heritage Customized Tour for 2017 is being re-introduced with new travel dates!

Departure from the US on Sept 4, 2017, arriving Glasgow September 5th. The return from Edinburgh will be on September 13, 2017.

Great news! We can offer this date at a lower rate, with the 8 day land-only at \$2,425 per person and includes gratuities to the tour director and motor coach driver!

Air-inclusive rate with land is \$3,870 per person, which estimates the air at \$1,445. Air will be round-trip Atlanta to Glasgow and returning Edinburgh to Atlanta.

Please note that if a lower airfare rate is available or if someone plans to travel using mileage, air can be booked outside the group reservation. Keep in mind, however, that airport transfers are currently provided based on people arriving at or about the same time.

Single Supplement is \$526 for anyone who will not be sharing a room with another person.

Optional Travel Protection is highly recommended and available upon request.

Deposit is \$250 per person due January 31, 2017, and should be sent "ATTN: Jane Shelton" at the address listed below

Final payment is June 1, 2017.

We need 20 passengers to have this group happen, since it is a customized tour for Flint River Presbytery; and based on comments, I believe we can reach that number fairly quickly! If we go over 24 passengers, the rate will drop by \$150 per person!!

If we reach 20 or more passengers, Globus will reward us with a \$1,000 charitable donation to Flint River Presbytery!!!

Itinerary for Customized Guided Tour

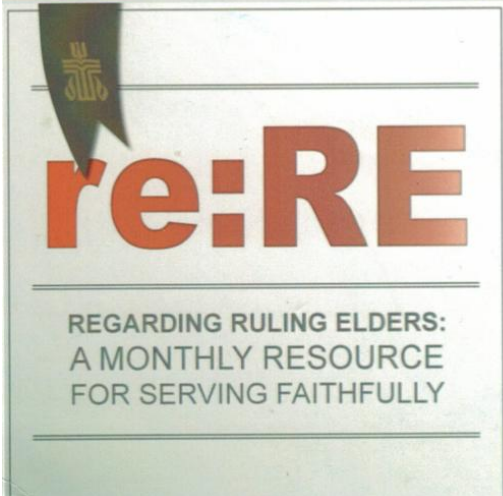
Flint River Presbytery Scotland Trip Volunteer Liaison

Jane Shelton, President
SOUTH GEORGIA TRAVEL
1300 Baytree Rd - Valdosta, GA 31602
(229) **244-2324** or 800-248-2324
www.sgatravel.com

Denominational Resources to Equip our Sessions and our Elders
to ensure strong, calm, and Christ-centered leadership regardless the situation

Need some new ideas/resources for Ruling Elder training? *See below.*

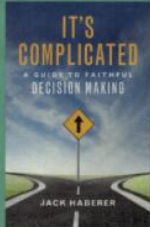
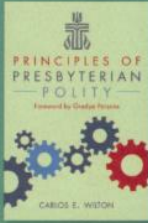
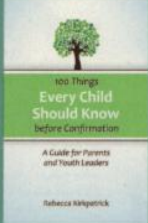

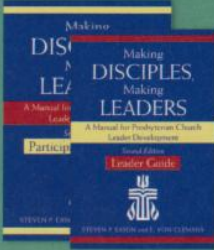
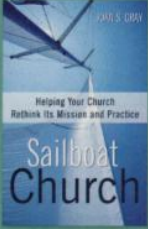
Interested in partnering with a sister congregation to do joint training by town or by cluster? *Contact June Denney and arrangements will be initiated.*




Ruling elders are called to ministry in partnership with teaching elders. Within this calling, ruling elders have responsibilities in several areas of the life of the church including exercise in leadership, governance, spiritual discernment, and discipline. This monthly series seeks to lift up the specific responsibilities while also providing an opportunity to reflect upon how they are lived out.

pcusa.org/rulingelders

Books for Church Leaders

 <p>Paperback • \$15.00 Sale Price: \$9.75</p>	 <p>Paperback • \$20.00 Sale Price: \$13.00</p>	 <p>Paperback • \$17.00 Sale Price: \$11.05</p>
 <p>Paperback • \$17.00 Sale Price: \$11.05</p>	 <p>Leader Guide: Paperback • \$20.00 Sale Price: \$13.00 Participant Workbook: Paperback • \$13.00 Sale Price: \$8.45</p>	 <p>Paperback • \$15.00 Sale Price: \$9.75</p>



www.pcusastore.com | 1.800.533.4371

6 Mission Agencies of PC(USA)

Did you know that the 6 mission agencies of the PCUSA are as follows?

These organizations support our presbytery and its mission to strengthen congregational witness every year! Be sure to save this newsletter so you have immediate access to all of the websites to our mission agencies.

- [BOP](#) (the Board of Pensions)
- [OGA](#) (the Office of the General Assembly)
- [PF](#) (Presbyterian Foundation)
- [PILP](#) (Presbyterian Investment and Loan Program)
- [PMA](#) (Presbyterian Mission Agency)
- [PPC](#) (Presbyterian Publishing Corporation)



7 easy ways to get your congregation connected

Jesus was a great storyteller. He showed us that sharing a tale or a parable could stir hearts, win people over, inspire the lukewarm, and build up God's realm on earth.

And does the PC(USA) ever have great stories to share!

Presbyterian News tells more stories than ever before about the best things people are doing in mission and ministry of every description, at home and around the world.

These are our stories . . . *your* stories! Use them to illustrate your sermons and talks, to perk up your church newsletter or website, or to share with friends and neighbors who can use a lift.

How do I tap into all these stories?

It's easy! [Find stories on our website](#) or click on these links:

1. Sign up to receive our [daily news summary by email](#)
2. Or, get a [weekly email recap](#) if you prefer

3. [Like us on Facebook](#) where you'll find even more new stories every day
4. [Follow us on Twitter](#) if you want it short and sweet
5. Prefer video? [Check out our YouTube channel](#)
6. [You're free to use any of these stories](#) in your newsletter, bulletin, website . . . or share them through social media
7. And, if you have your own stories, photos or videos that you'd like to see featured on our national Presbyterian church website, [contact us!](#)

Presbyterians
Today

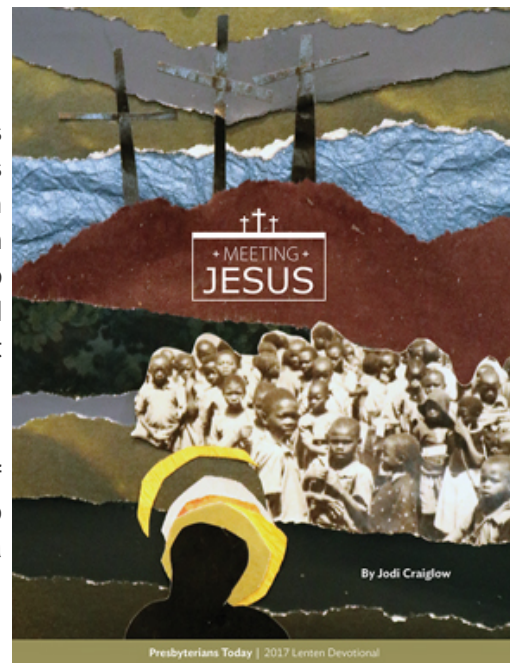
2017 Lenten Devotional Available

Meeting Jesus

This year's Lenten devotional by Jodi Craiglow invites us to join 47 biblical figures who encounter Jesus during his earthly life and ministry. Speaking in first-person conversational form, these characters tell us "in their own words" what they've seen and learned. They draw us in to share their joys and struggles and help us understand Jesus in a richer way. The narratives are rounded out with a daily Scripture reading and short prayer.

Along with the text, *Meeting Jesus* includes a collection of multimedia artwork from Creation Lab in Chicago featuring ancient Lenten symbols expressed in a contemporary style.

Meeting Jesus is perfect for congregations, families, and individuals.



2017 Lenten Discount Pricing: 1 copy, \$4.50 * 2-9 copies, \$3.50 each * 10-99 copies, \$2.50 each * 100+ copies, \$1.95 each. Shipping: 10% of order, \$5.25 minimum.

Order by phone at 800-524-2612 and ask for PDS 17116-16-008.

WE are CONNECTED ONE to ANOTHER:

CONCERNS and CELEBRATIONS around our PRESBYTERY

Our Office Manager, **June Denney**, has completed her 8 rounds of chemotherapy and is largely recovered from her surgery on **Wednesday, November 16th**. Her radiation treatments began last week, which means that she will be leaving the office around 3:30 for the next 2 months.

MONTREAT College Conference "Beyond Babel" touched hearts and minds in significant ways! **Stephanie Boaz**, formerly of the **Abbey @ CSU** and **Melissa Coleman** of the **Center @ VSU** connect unexpectedly and joyfully with **Nathan Sauter**, formerly of **First (Columbus)** and **Jose Maley** of **Northminster (Macon)**.



A snapshot of our Flint River Presbytery students who attended Montreat 2017!

Our students were in the front row every time!



In our NE Cluster

Paula Hoffman (pastor at First/Warner Robins) and **Beth Holloway** (CRE at Wayside) have both been struggling with physical ailments.

Tom Sparks, former interim at First (Albany) will begin his work as interim at **Northminster (Macon)** on January 12th after a bridge-interim by **Charlie Durham**.

Brvan Whitfeld. New Testament professor at Mercer University. will soon begin his work as

interim at St. Andrews (Macon).

In our NW Cluster

Stephanie Boaz has resigned as the campus minister at the **Abbey Fellowship at CSU** after 2 1/2 years of incredibly committed leadership. She will continue to serve as the pastor at **Morningside** and focus her efforts on caring for her 5-year old son who has autism.

In our Central Cluster

Continue to pray for and reach out to our **Albany congregations (CK Smith, Covenant and First)** as well as to several members of our **Cuba congregation** who recently endured the effects of a tornado on Monday, January 2nd. As needs and work days solidify, details will be sent.

And continue to remember the **Dawson congregation**, extend to them your love and grace, and remind them about the gift of our presbytery, as they begin the discernment process around a potential dismissal.



Jim and Gale Rogers of Camilla reaffirmed their wedding vows on Saturday, January 7th with **Joshua and Sommer Bowers** officiating. Jim and Gale continue to serve our presbytery as key volunteers, assisting in meeting set up and administrative tasks.

58 people from our **Fort Gaines** congregation carried the Light of Christ into the world and stopped traffic following a beautiful candlelight communion service on Christmas Eve.



In our Southern Cluster

Karl Kling was joyfully installed at **Bainbridge** on Sunday, December 4th. We extend an official welcome to our brother in Christ.



A "SPARK-LING" EXCHANGE

Have stuff at your church you don't need?

Need stuff for your church that you don't have?

There are all kinds of gently used items that might be of interest to sister congregations. If you would like to submit an offer or make a request, please submit the information by using the form below. You can fill it out online and it will go directly to June.

For Sale (below): Peavey Amplifier. \$100. Call Melissa Coleman,
the campus ministry director at The Center @ VSU for more info.

(229) 548-1707



For Sale: 4 OSP microphone stands. \$25 each.

Call Melissa Coleman for more info. (229) 548-1707



For Sale (see above and below): Pioneer Amplifier VSX-D510 surround sound system with Pioneer S-FCR W210-K subwoofer & 5 small speakers. \$250.

Call Melissa Coleman for more info. (229) 548-1707



NEW ITEMS for sale!!

***A newly-refurbished espresso machine is available
due to the ongoing liquidation of Bare Bulb.***

*A multitude of musical equipment and technical sound equipment is available as well.
Call Jerry Watts for cost and details at (478) 747-3631...and please spread the word.*

[Exchange Form](#)

AmazonSmile - place and order and donate to FRP this Christmas Season!

**Be sure to use "AmazonSmile" as a small but important way
to give back to FRP.**

Welcome to AmazonSmile!

Thank you for supporting Flint River Presbytery, Inc.

**Remember, always start at <http://smile.amazon.com>
and Amazon will donate 0.5% of the price of your eligible
AmazonSmile purchased to Flint River Presbytery.**

<http://smile.amazon.com>

January 2017 Calendar

plus a link to our year-long calendar including committee dates and presbytery meeting dates!

**All events are held at the presbytery office unless otherwise noted*.*

JANUARY

10		Deadline to register for MONTREAT!
11	10:00 am	Interim Gathering
12	10:30 am	COM
14	9:00 am	Statistical Workshop, First (Valdosta)
	2:00 pm	Statistical Workshop, First (Bainbridge)
15		Presbytery Grant Applications are due
17		TRE Class Application deadline
19	10:00 am	CPM
	2:00 pm	Finance Committee in Americus
20	10:00 am	CME, Covenant, Albany
21	9:00 am	Statistical Workshop, Beth Salem, Columbus
	2:00 pm	Statistical Workshop, Fort Valley
22		Leadership Exchange
31		Scotland trip deposit due

FEBRUARY

2		SW/Central Clergy Cluster lunch
9	12:00 pm	NE Clergy Cluster lunch
9-10		"Fresh Start" Reformation Project Retreat
11	10:00 am	FRP meeting at Second (Thomasville)
		<i>**Please note: amendments will be discussed and voted upon <u>following lunch</u>**</i>
18	11:00 am - 3:00 pm	Children's Day
25	10:00 am	COF, The Abbey, Columbus
27		Columbus Reformation Project

2017 Annual Calendar

available here with all known meetings for the year

Pastoral Care Continuing Education Offered Monthly in Columbus

Greetings from the Turner Ministry Resource Center of the Pastoral Institute!

We are happy to introduce a new and exciting training opportunity for pastors, providers of lay pastoral care, and Stephen's Ministers.

The **Pastoral Care Symposia** will be an ongoing training program for clergy and congregational leaders. Each Spring and Fall there will be training days on a monthly basis. The format will be lecture, question and discussion, and small group interaction. These sessions will be designed around issues raised by local clergy. The sessions for the Spring module are Grief and Loss, Addictions, Pre-Marital/Marital Therapy, and Pastoral/Congregational Transitions. The opportunity to obtain 12 continuing education units (CEUs) will be available for clergy.

For your convenience, please [click here](#) to see more in-depth information.

Pastoral Institute, Inc.
2022 Fifteenth Avenue
Columbus, GA 31901

Phone: 706-649-6360, ext 1306

Flint River Presbytery, 826 Liberty Expressway, SE, Albany, GA 31705

SafeUnsubscribe™_jdenney@flintriverpresbytery.org

[Forward email](#) | [Update Profile](#) | [About our service provider](#)

Sent by jdenney@flintriverpresbytery.org in collaboration with



[Try it free today](#)